

AUSTRALIAN AMALGAMATED TERMINALS PTY LTD (AAT)

BI-ANNUAL COMPLIANCE REPORT
DATE OF REPORT: 24th February, 2023

REPORT PERIOD: 1st JULY 2022 TO 31ST DECEMBER 2022

KPI	Port Kembla			Brisbane		
KPI 1 Truck Turnaround Time Average time spent at the terminal picking up or delivering cargo, measured from gate entry through to departure from terminal		Average time	Explanation		Average time	Explanation
	Quarter 1			Quarter 1		
	Automobiles - Qube	43 mins		Automobiles - Qube	37 mins	
	Automobiles - Linx	41 mins		Automobiles - Linx	34 mins	
	Breakbulk - Qube	1 hr 54 mins		Automobiles - TML	N/A	Did not handle PCC vessels
	Breakbulk - Linx	1 hr 23 mins		Breakbulk - Qube	1 hr 33 mins	
				Breakbulk - Linx	1 hr 21 mins	
				Breakbulk - TML	1 hr 30 mins	
	Quarter 2			Quarter 2		
	Automobiles - Qube	45 mins		Automobiles - Qube	34 mins	
	Automobiles - Linx	46 mins		Automobiles - Linx	30 mins	
	Breakbulk - Qube	1 hr 14 mins		Automobiles - TML	N/A	Did not handle PCC vessels
	Breakbulk - Linx	1 hr 19 mins		Breakbulk - Qube	1 hr 05 mins	
				Breakbulk - Linx	1 hr 02 mins	
			Breakbulk - TML	1 hr 10 mins		
KPI 2 Yard Dwell Time - Imports		Average time	Explanation		Average time	Explanation
	Quarter 1			Quarter 1		
	Automobiles - Qube	142 hrs 51 mins		Automobiles - Qube	140 hrs 16 mins	High volume of cars held for cleaning
	Automobiles - Linx	175 hrs 49 mins		Automobiles - Linx	76 hrs 53 mins	
	Breakbulk - Qube	123 hrs 20 mins		Automobiles - TML	N/A	Did not handle PCC vessels
	Breakbulk - Linx	129 hrs 55 mins		Breakbulk - Qube	102 hrs 47 mins	
				Breakbulk - Linx	191 hrs 18 mins	
				Breakbulk - TML	128 hrs 11 mins	
	Quarter 2			Quarter 2		
	Automobiles - Qube	195 hrs 14 mins		Automobiles - Qube	112 hrs 31 mins	
	Automobiles - Linx	198 hrs 48 mins				
	Breakbulk - Qube	88 hrs 45 mins				
			This variance related to a large steel shipment that was progressively received over an extended period which had a significant impact on dwell time.			
	Breakbulk - Linx	205 hrs 30 mins		Automobiles - Linx	77 hrs 58 mins	
			Automobiles - TML	N/A	Did not handle PCC vessels	
			Breakbulk - Qube	131 hrs 56 mins	Qube handled a majority of steel during this period	
			Breakbulk - Linx	97 hrs 36 mins		
			Breakbulk - TML	107 hrs 38 mins		
KPI 3 Yard Dwell Time - Exports Average time export cargo units stayed at the designated cargo pick-up area of the terminal waiting to be loaded onto a vessel, once the cargo is ready to be loaded.		Average time	Explanation		Average time	Explanation
	Quarter 1		Attribute to high volume of transshipment cars	Quarter 1		
	Automobiles - Qube	343 hrs 32 mins		Automobiles - Qube	377 hrs 45 mins	Cars held due to snail contamination
	Automobiles - Linx	186 hrs 51 mins		Automobiles - Linx	163 hrs 10 mins	
	Breakbulk - Qube	289 hrs 30 mins		Automobiles - TML	0 hrs 0 mins	Did not handle PCC vessels
	Breakbulk - Linx	179 hrs 59 mins		Breakbulk - Qube	198 hrs 45 mins	
				Breakbulk - Linx	244 hrs 59 mins	
				Breakbulk - TML	320 hrs 33 mins	
	Quarter 2			Quarter 2		
	Automobiles - Qube	192 hrs 15 mins		Automobiles - Qube	188 hrs 53 mins	
	Automobiles - Linx	190 hrs 11 mins				
	Breakbulk - Qube	346 hrs 51 mins				
				Automobiles - Linx	338 hrs 19 mins	High volume of quarantine held cars for Linx which we subsequently re-exported
				Automobiles - TML	0 hrs 0 mins	
			Breakbulk - Qube	231 hrs 11 mins		
			Breakbulk - Linx	222 hrs 48 mins		
			Breakbulk - TML	148 hrs 45 mins		
KPI 4 Berthing Allocation Changes Number of incidents where there was a delay in start of stevedoring operations due to deviation between planned allocation of berth and actual allocation, where AAT was responsible for such deviation.		Number of Incidents	Explanation		Number of Incidents	Explanation
	Quarter 1			Quarter 1		
	Qube	Zero		Qube	Zero	
	Linx	Zero		Linx	Zero	
				TML	Zero	
	Quarter 2			Quarter 2		
	Qube	Zero		Qube	Zero	
	Linx	Zero		Linx	Zero	
				TML	Zero	
KPI 5 Mooring Services Number of incidents where there was a delay in the mooring of vessels due to a deviation between planned berth allocation and actual allocation, where AAT was responsible for such deviation.		Number of Incidents	Explanation		Number of Incidents	Explanation
	Quarter 1			Quarter 1		
	Qube	Zero		Qube	Zero	
	Linx	Zero		Linx	Zero	
				TML	Zero	
	Quarter 2			Quarter 2		
	Qube	Zero		Qube	Zero	
	Linx	Zero		Linx	Zero	
				TML	Zero	
KPI 6 Allocation of first point of rest area Data showing, for each cargo shipment: a) berth allocated to vessel b) allocated storage area in the Terminal Layout Plan for the cargo's first This data can be set out in an Attachment to this Compliance Report		Refer Attachment A			Refer Attachment A	
			Explanation			Explanation
KPI 7 Equipment Availability		Number of Incidents	Explanation		Number of Incidents	Explanation
	Quarter 1			Quarter 1		
	Qube	Zero		Qube	Zero	

Number of deviations between AAT equipment requested by stevedore or by shipping line and actual machinery provided (including standard of equipment, age, type and capacity)	Linx	Zero		Linx	Zero	
				TML	Zero	
	Quarter 2			Quarter 2		
	Qube	Zero		Qube	Zero	
	Linx	Zero		Linx	Zero	
				TML	Zero	
KPI 8 Mechanical Support Average time lost in excess of one hour due to failure of AAT in providing mechanical breakdown support, reported from the time Mechanical Engineer officially notified to the time the issue was resolved.		Average time lost	Explanation		Average time lost	Explanation
	Quarter 1			Quarter 1		
	Qube	Zero		Qube	Zero	
	Linx	Zero		Linx	Zero	
				TML	Zero	
	Quarter 2			Quarter 2		
	Qube	Zero		Qube	Zero	
	Linx	Zero		Linx	Zero	
				TML	Zero	
KPI 9 Cargo dwell time over free time/long terms storage Time cargo units stay over free time, excluding Customs, DAFF and customer hold.		Units/percentage	Explanation		Units/percentage	Explanation
	Quarter 1	Services to Qube		Quarter 1	Services to Qube	
	Services to Qube			Services to Qube		
	Total Cargo Units	73,699		Total Cargo Units	93,034	
	Units staying over free time	28,368		Units staying over free time	21,096	
	Units over free time due Customs/Daff or customer	293		Units over free time due Customs/Daff or customer	100	
	Units staying over free time excluding Customs etc. as percentage of total units	38%		Units staying over free time excluding Customs etc. as percentage of total units	23%	
	Services to Linx			Services to Linx		
	Total Cargo Units	23,574		Total Cargo Units	45,663	
	Units staying over free time	7,194		Units staying over free time	6,221	
	Units over free time due Customs/Daff or customer	613		Units over free time due Customs/Daff or customer	58	
	Units staying over free time excluding Customs etc. as percentage of total units	28%		Units staying over free time excluding Customs etc. as percentage of total units	13%	
	Quarter 2			Services to TML		
	Services to Qube			Total Cargo Units	6245	
	Total Cargo Units	95,879		Units staying over free time	0	
	Units staying over free time	41,971		Units over free time due Customs/Daff or customer	0	
	Units over free time due Customs/Daff or customer	1074		Units staying over free time excluding Customs etc. as percentage of total units	0	
	Units staying over free time excluding Customs etc. as percentage of total units	43%		Units staying over free time excluding Customs etc. as percentage of total units	0	
	Services to Linx			Quarter 2		
	Total Cargo Units	27,453		Services to Qube		
	Units staying over free time	11,236		Total Cargo Units	87,693	
	Units over free time due Customs/Daff or customer	35		Units staying over free time	19,438	
	Units staying over free time excluding Customs etc. as percentage of total units	41%		Units over free time due Customs/Daff or customer	250	
				Units staying over free time excluding Customs etc. as percentage of total units	22%	
				Services to Linx		
				Total Cargo Units	274,430	
				Units staying over free time	5,233	
				Units over free time due Customs/Daff or customer	9	
				Units staying over free time excluding Customs etc. as percentage of total units	19%	
				Services to TML		
			Total Cargo Units	12,309		
			Units staying over free time	0		
			Units over free time due Customs/Daff or customer	0		
			Units staying over free time excluding Customs etc. as percentage of total units	0%		
KPI 10 Confidentiality and ring-fencing Number of complaints received by AAT concerning non-compliance with Clause 6 of the Undertaking Number of instance of breaches of Clause 6 AAT's response to the complaints and/or breaches		Number of Complaints	Explanation			Explanation
	Quarter 1			Quarter 1		
	Complaints for Non-Compliance with Clause 6			Complaints for Non-Compliance with Clause 6		
	Services to Qube	Zero		Services to Qube	Zero	
	Services to Linx	Zero		Services to Linx	Zero	
	Breaches of Clause 6 Clause 6			Services to TML	Zero	
	Services to Qube	Zero		Breaches of Clause 6 Clause 6		
	Services to Linx	Zero		Services to Qube	Zero	
				Services to Linx	Zero	
	Quarter 2			Services to TML	Zero	
	Complaints for Non-Compliance with Clause 6			Quarter 2		
	Services to Qube	Zero		Complaints for Non-Compliance with Clause 6		
	Services to Linx	Zero		Services to Qube	Zero	
	Breaches of Clause 6 Clause 6			Services to Linx	Zero	
	Services to Qube	Zero		Services to TML	Zero	
	Services to Linx	Zero		Breaches of Clause 6 Clause 6		
			Services to Qube	Zero		
			Services to Linx	Zero		
			Services to TML	Zero		

KPI 11 Complaints						
		Number of Complaints	Explanation		Number of Complaints	Explanation
Number of complaints raised under the Price Dispute Resolution Process and the Non-Price Resolution Process under the Undertaking	Quarter 1			Quarter 1		
	Complaints Under Price and non-Price Dispute Resolution Process			Complaints Under Price and non-Price Dispute Resolution Process		
	Services to Qube	Zero		Services to Qube	Zero	
	Services to Linx	Zero		Services to Linx	Zero	
	Details of complaint and outcome	Zero		Services to TML	Zero	
				Details of complaint and outcome	Zero	
	Quarter 2			Quarter 2		
	Complaints Under Price and non-Price Dispute Resolution Process			Complaints Under Price and non-Price Dispute Resolution Process		
	Services to Qube	Zero		Services to Qube	Zero	
	Services to Linx	Zero		Services to Linx	Zero	
	Details of complaint and outcome	Zero		Services to TML	Zero	
				Details of complaint and outcome	Zero	

PART B: TERMINAL LAYOUT PLAN FOR EACH TERMINAL

See attachment Part B

PART C: TERMINAL USERS IN WHICH QUBE OR A QUBE RELATED ENTITY HAS AN INTEREST

See attachment Part C

Attachment A

KPI 6

Allocation of first point of rest

Fisherman Islands

Jul 1 – December 31st, 2022

JULY 2022

NUMBER	DATE	STEVE-DORE	VESSEL	VOYAGE	STARTING SHIFT	BERTH #	BERTH DELAY (HRS)	LAYDOWN	MACHINERY REQUEST RECEIVED	MACHINERY REQUEST FILLED	MACHINERY ISSUES	NOTES
1	0600/1	LINX	ERIDANUS LEADER	52	DAY	1	24	A, C, M	YES	YES	NIL	Awaiting departure of Athens Hwy (Qube - K-Line)
2	1500/1	QP	TACOMA TRADER	0425S	EVE	2	16	B	YES	YES	NIL	Awaiting departure of OT Ideaal (Linx - OkTedi)
3	1700/1	TML	BBC OCEAN	201S/201N	DAY	2	56	B	YES	YES	NIL	Awaiting departure of Tacoma Trader (Qube - Sofrana)
4	1730/3	LINX	HERCULES LEADER	87	EVE	1	24	A, C, D, M	YES	YES	NIL	Awaiting departure of Eridanus Leader (Linx - NYK)
5	1300/3	TML	VANUATU CHIEF	2207S/2207N	MIDN	2	72	B	YES	YES	NIL	Awaiting departure of BBC Ocean (TML - BWS)
6	1000/4	LINX	TRANS FUTURE 5	142	EVE	1	16	A, C	YES	YES	NIL	Awaiting departure of Hercules Leader (Linx - NYK)
7	2230/4	QP	GLOVIS CHORUS	79	DAY	1	24	A, C, D	YES	YES	NIL	Awaiting departure of Trans Future 5 (Linx - Toyofuji)
8	0600/6	QP	TORONTO	EE212	DAY	1	16	A, C	YES	YES	NIL	Awaiting departure of Glovis Chorus (Qube - MOL)
9	0400/7	QP	RCC PASSION	2	DAY	1	24	A, C, D	YES	YES	NIL	Awaiting departure of Toronto (Qube - WWO)
10	0100/8	QP	AAL MELBOURNE	22004	EVE	3	32	NS, H, J	YES	YES	NIL	Awaiting departure of AAL Bangkok (Qube - AAL)
11	2000/8	TML	BBC PACIFIC	301S/301N	DAY	2	NIL	B	YES	YES	NIL	
12	0100/9	QP	THALATTA	EF211	DAY	1	NIL	C	YES	YES	NIL	
13	0500/9	QP	PROGRESS ACE	144	DAY	1	16	A, C, D	YES	YES	NIL	Awaiting departure of Thalatta (Qube - WWO)
14	1000/9	QP	MORNING PRIDE	EE210	MIDN	1	32	C, M	YES	YES	NIL	Awaiting departure of Progress Ace (Qube - MOL)
15	2100/9	LINX	HOEGH NEW YORK	134	MIDN	1	40	A, C, D	YES	YES	NIL	Awaiting departure of Morning Pride (Qube - WWO)
16	1200/11	QP	MANON	EE211	MIDN	1	32	A, C	YES	YES	NIL	Awaiting departure of Hoegh New York (Linx - Hoegh)
17	0400/12	TML	GLAFKOS	2202S	EVE	3	152	NS, H, J	YES	YES	NIL	Awaiting departure of AAL Melbourne (Qube - AAL)
18	1300/12	TML	SAMOA CHIEF	2208S/2208N	DAY	2	32	B	YES	YES	NIL	Awaiting departure of Lihir Chief (TML - Swire)
19	2000/12	QP	MORNING CARA	1	MIDN	1	16	A, C, D, M	YES	YES	NIL	Awaiting departure of Manon (Qube - WWO)
20	2130/12	TML	LIHIR CHIEF	2295S/2206N	DAY	2	NIL	B	YES	YES	NIL	
21	0700/13	QP	AAL SHANGHAI	22005	DAY	3	352	NS, G, H	YES	YES	NIL	Awaiting departure of Onyx Arrow (Qube - K-Line)
22	0700/13	QP	SOFRANA SURVILLE	278S	EVE	2	88	B	YES	YES	NIL	Awaiting departure of Samoa Chief (TML - Swire) and Site HV Maintenance Shutdown on 16/7/22.
23	0900/13	LINX	DIONYSOS LEADER	98	MIDN	1	32	C, D, M	YES	YES	NIL	Awaiting departure of Morning Cara (Qube - MOL)
24	2300/14	LINX	HERMES LEADER	54	EVE	1	32	A, D, M	YES	YES	NIL	Awaiting departure of Dionysos Leader (Linx - NYK)
25	0001/15	LINX	HOEGH SEOUL	122	DAY	1	16	A, C, D	YES	YES	NIL	Awaiting departure of Hermes Leader (Linx - NYK)
26	1205/15	QP	AAL JUPITER	22003	MIDN	2	80	OS, F	YES	YES	NIL	Awaiting departure of Sofrana Surville (Qube - Sofrana)
27	2000/15	LINX	O.T. IDEAL	9	MIDN	2	232	B	YES	YES	NIL	Awaiting departure of AAL Jupiter (Qube - AAL)
28	0830/16	QP	GRAND MARK	1	EVE	1	56	A, C, D, M	YES	YES	NIL	Awaiting departure of Hoegh Seoul (Linx - Hoegh)
29	2130/16	LINX	GREEN BAY	109	DAY	1	48	A, M	YES	YES	NIL	Awaiting departure of Grand Mark (Qube - MOL)
30	0215/17	LINX	HOEGH BANGKOK	69	DAY	1	72	A, C, D	YES	YES	NIL	Awaiting departure of Green Bay (Linx - NYK)
31	2200/17	LINX	FLEVOGRACHT	2206	EVE	2	224	E, F, OTP	YES	YES	NIL	Awaiting departure of OT Ideaal (Linx - OkTedi)
32	0530/18	QP	NOCC ATLANTIC	EE214	EVE	1	168	A, C	YES	YES	NIL	Awaiting departure of Turandot (Qube - Armacup)
33	0830/18	QP	TURANDOT	2212	EVE	1	72	A, D	YES	YES	NIL	Awaiting departure of Hoegh Bangkok (Linx - Hoegh)
34	2130/18	QP	BOSPORUS HIGHWAY	126	EVE	3	152	E, M	YES	YES	NIL	Awaiting departure of Glafkos (TML - Swire)
35	0001/19	LINX	TRANS FUTURE 6	139	DAY	1	168	A, C	YES	YES	NIL	Awaiting departure of NOCC Atlantic (Qube - WWO)
36	1400/22	QP	KITE ARROW	0322	MIDN	2	152	OS, F	YES	YES	NIL	Awaiting departure of BBC Caribbean (Linx - DSV)
37	PM/23	QP	GALAXY ACE	75	MIDN	1	224	A, C, D	YES	YES	NIL	Awaiting departure of Trans Future 6 (Linx - Toyofuji)
38	1200/23	QP	ONYX ARROW	101	EVE	3	64	E, M	YES	YES	NIL	Awaiting departure of Bosphorus Highway (Qube - K-Line)
39	1630/24	QP	MORNING CLARA	2263	EVE	1	64	A, C, D	YES	YES	NIL	Awaiting departure of Galaxy Ace (Qube - MOL)
40	2135/24	QP	PRESTIGE ACE	180	MIDN	1	112	A, C, D, M	YES	YES	NIL	Awaiting departure of Artemis Leader (Linx - NYK)
41	0200/25	LINX	ARTEMIS LEADER	109	DAY	1	96	A, C, M	YES	YES	NIL	Awaiting departure of Walrus Ace (Qube - MOL)
42	0700/25	LINX	BBC CARIBBEAN	18	DAY	2	160	B	YES	YES	NIL	Awaiting departure of Flevogracht (Qube - Asiaworld)
43	1000/25	QP	WALRUS ACE	31	EVE	1	72	A, D	YES	YES	NIL	Awaiting departure of Morning Clara (Qube - Armacup)
44	1100/26	QP	SWAN ACE	115	EVE	1	80	M	YES	YES	NIL	Awaiting departure of Prestige Ace (Qube - MOL)
45	0900/27	QP	MIGNON	EE213	DAY	1	104	C, D	YES	YES	NIL	Awaiting departure of Bergamot Ace (Qube - MOL)
46	0900/27	QP	BERGAMOT ACE	118	DAY	1	88	A, C, M	YES	YES	NIL	Awaiting departure of Swan Ace (Qube - MOL)
47	1200/27	QP	GRAVITY HIGHWAY	60	MIDN	1	120	A, C, M	YES	YES	NIL	Awaiting departure of Mignon (Qube - WWO)
48	1800/27	QP	XIA MEN ZE PING	2207	DAY	3	176	WHARF	YES	YES	NIL	Awaiting departure of AAL Shanghai (Qube - AAL)
49	0300/28	TML	TS GOLF	2205	DAY	3	160	OS, NS, F, H, W	YES	YES	NIL	Awaiting departure of Xia Men Ze Ping (Qube - Pioneer Shipping)
50	0700/29	QP	MORNING CORNET	EZ204	EVE	1	104	A, D	YES	YES	NIL	Awaiting departure of Gravity Highway (Qube - K-Line)
51	1030/29	LINX	SAGA ODYSSEY	47SZ	EVE	3	264	OS, NS, E, G, J, W	YES	YES	NIL	Awaiting departure of TS Golf (TML - Swire)

JULY 2022

52	1100/31	LINX	LEO LEADER	95	DAY	1	88	A, C	YES	YES	NIL	Awaiting departure of Morning Cornet (Qube - WWO)
----	---------	------	------------	----	-----	---	----	------	-----	-----	-----	---

Legend - Berth # and Laydown

	Primary
	Secondary
	Tertiary

SUMMARY	LINX	QUBE	TML	COMMENT
TOTAL VESSELS FOR MONTH	16	29	7	
GREEN BERTH (Primary)	16	29	7	
ORANGE BERTH (Secondary)	0	0	0	
RED BERTH (Tertiary)	0	0	0	
GREEN LAYDOWN (Primary)	5	11	7	
ORANGE LAYDOWN (Secondary)	11	18	0	
RED LAYDOWN (Tertiary)	0	0	0	
NUMBER OF BERTHING DELAYS	16	28	5	
NUMBER OF MACHINERY ISSUES/REQUESTS NOT MET	0	0	0	

AUGUST 2022

NUMBER	DATE	STEVE-DORE	VESSEL	VOYAGE	STARTING SHIFT	BERTH #	BERTH DELAY (HRS)	LAYDOWN	MACHINERY REQUEST RECEIVED	MACHINERY REQUEST FILLED	MACHINERY ISSUES	NOTES
1	1400/1	QP	AAL SINGAPORE	22006	MIDN	3	432	NS, G, H, J	YES	YES	NIL	Following departure of Saga Odyssey (Linx - Saga Welco)
2	2330/1	QP	VIKING PASSAMA	2264	DAY	2	72	M	YES	YES	NIL	Following departure of Kite Arrow (Qube - G2Ocean)
3	0200/2	QP	THERMOPYLAE	EF214	MIDN	1	40	C	YES	YES	NIL	Following departure of Leo Leader (Linx - NYK)
4	1800/2	QP	BELUGA ACE	37	EVE	GB	40	A	YES	YES	NIL	Following departure of New Century 2 (Linx - Toyofuji)
5	1800/3	LINX	NEW CENTURY 2	173	EVE	GB	8	C, MUT (GB)	YES	YES	NIL	Following departure of vessel at Grain Berth
6	1900/3	QP	SOFRANA SURVILLE	279N	EVE	2	56	B	YES	YES	NIL	Following departure of Viking Passama (Qube - Armacup)
7	0200/5	QP	PIA	1306012	DAY	1	48	UHOOK	YES	YES	NIL	Following departure of Palmela (Qube - MOL)
8	0800/4	TML	PORT VILA CHIEF	2209S/2209N	EVE	2	144	B	YES	YES	NIL	Following departure of Lihir Chief (TML - Swire)
9	1400/4	QP	PALMELA	189	EVE	1	40	A, C, D	YES	YES	NIL	Following departure of Thermopylae (Qube - WWO) and yard space
10	1700/4	QP	CHIPOLBROK SUN	HF2201	DAY	2	456	UHOOK	YES	YES	NIL	Following departure of Kokopo Chief (TML - Swire)
11	0230/5	QP	WEAVER ARROW	0422	DAY	2	216	OS, F	YES	YES	NIL	Following departure of Port Vila Chief (TML - Swire)
12	0930/5	TML	BBC AUSTRALIA	102	MIDN	2	72	B	YES	YES	NIL	Following departure of Sofrana Surville (Qube - Sofrana)
13	1000/6	QP	YOCHOW	2201	MIDN	3	504	OS, NS, F, H	YES	YES	NIL	Following departure of AAL Singapore (Qube - AAL)
14	0200/7	TML	LIHIR CHIEF	2206S/2207N	EVE	2	80	B	YES	YES	NIL	Following departure of BBC Australia (TML - BWS)
15	0500/7	QP	MORNING CRYSTAL	2265	DAY	1	16	A, C, D, M	YES	YES	NIL	Following departure of Pia (Qube - BBC)
16	1300/8	QP	ATHENS HIGHWAY	121	MIDN	1	24	A, D, M	YES	YES	NIL	Following departure of Morning Celesta (Qube - WWO)
17	1700/8	QP	EUPHONY ACE	132	DAY	GB	32	A, C	YES	YES	NIL	Following departure of vessel at Grain Berth. Due to cargo suitability vessel was able to ahead of others at Grain Berth.
18	2300/8	QP	MORNING CELESTA	EE215	DAY	1	16	C	YES	YES	NIL	Following departure of Morning Crystal (Qube - Armacup)
19	2000/9	LINX	O.T. IDEAAAL	10	DAY	2	240	B	YES	YES	NIL	Following departure of Lihir Chief (TML - Swire)
20	0400/10	LINX	HERCULES LEADER	88	EVE	1	32	A, C, D	YES	YES	NIL	Following departure of Athens Hwy (Qube - K-Line) and yard space
21	0930/10	QP	IGUAZU HIGHWAY	40	MIDN	1	56	C, D, M	YES	YES	NIL	Following departure of Hercules Leader (Linx - NYK) and yard space
22	1230/10	QP	GLOVIS COUNTESS	24	MIDN	1	72	D, M	YES	YES	NIL	Following departure of Iguazu Highway (Qube - K-Line) and yard space
23	1000/14	QP	SALOME	NZ204	DAY	1	64	A	YES	YES	NIL	Following departure of Weaver Arrow (Qube - G2Ocean) from berth 2, due to LOA of Salome.
24	1100/14	LINX	HOEGH TROTTER	32	EVE	1	96	A, D, M	YES	YES	NIL	Following departure of Salome (Qube - WWO)
25	0300/15	LINX	ERIDANUS LEADER	53	DAY	1	120	A, C, D, M	YES	YES	NIL	Following departure of Hoegh Trotter (Linx - Hoegh)
26	0900/15	LINX	TRANS FUTURE 7	139	DAY	1	136	M	YES	YES	NIL	Following departure of Eridanus Leader (Linx - NYK)
27	1400/16	QP	GLOVIS CENTURY	1	DAY	GB	32	D, M	YES	YES	NIL	Following departure of vessel at Grain Berth. Due to cargo suitability vessel was able to ahead of others at Grain Berth.
28	2300/16	QP	PROGRESS ACE	145	MIDN	1	136	A, C, D	YES	YES	NIL	Following departure of Tongala (Qube - WWO)
29	1500/17	QP	CHIPOL BAOAN	2203	MIDN	3	144	UHOOK	YES	YES	NIL	Following departure of Yochow (Qube - Pioneer Shipping)
30	1700/17	TML	TONGA CHIEF	A2210N	EVE	2	112	B	YES	YES	NIL	Following departure of OT Ideaal (Linx - OkTedi)
31	18-Aug	TML	LIHIR CHIEF**	2206S/2207N	EVE	2	40	B	YES	YES	NIL	Following departure of Salome (Qube - WWO)
32	1000/18	TML	KOKOPO CHIEF	2211S/2213N	DAY	2	152	B	YES	YES	NIL	Following departure of Tonga Chief (TML - Swire)
33	0700/19	QP	TONGALA	EE217	MIDN	1	56	FLYOVER	YES	YES	NIL	Following departure of Trans Future 7 (Linx - Toyofuji)
34	0930/19	LINX	VENUS LEADER	41	MIDN	1	96	A, C, M	YES	YES	NIL	Following departure of Progress Ace (Qube - MOL)
35	1900/20	LINX	HOEGH TRAVELLER	34	MIDN	1	88	A, D	YES	YES	NIL	Following departure of Venus Leader (Linx - NYK)
36	0700/23	QP	BESS	EE216	MIDN	1	56	A, C	YES	YES	NIL	Following departure of Hoegh Traveller (Linx - Hoegh)
37	0800/24	QP	EASTERN HIGHWAY	139	DAY	GB	16	C	YES	YES	NIL	Following departure of vessel at Grain Berth. Due to cargo suitability vessel was able to ahead of others at Grain Berth.
38	1130/24	QP	RUBY ACE	100	EVE	1	48	A, C	YES	YES	NIL	Following departure of Bess (Qube - WWO)
39	2359/24	LINX	GRANDE NEW JERSEY	06/22	DAY	1	48	D, M, FLYOVER	YES	YES	NIL	Following departure of Ruby Ace (Qube - MOL)

AUGUST 2022

40	1030/25	LINX	GAJA	2201	MIDN	2	176	B	YES	YES	NIL	Following departure of
41	0230/26	QP	TITANIA	EF215/AF246	DAY	1	72	C	YES	YES	NIL	Following departure of
42	2100/26	LINX	HARVEST LEADER	64	DAY	1	72	A, C	YES	YES	NIL	Following departure of
43	1430/28	QP	DOVER HIGHWAY	92	DAY	1	48	A, C, D	YES	YES	NIL	Following departure of

Legend - Berth # and Laydown

	Primary
	Secondary
	Tertiary

SUMMARY	LINX	QUBE	TML	COMMENT
TOTAL VESSELS FOR MONTH	11	26	6	
GREEN BERTH (Primary)	10	21	6	
ORANGE BERTH (Secondary)	1	5	0	
RED BERTH (Tertiary)	0	0	0	
GREEN LAYDOWN (Primary)	3	16	6	
ORANGE LAYDOWN (Secondary)	6	9	0	
RED LAYDOWN (Tertiary)	2	1	0	
NUMBER OF BERTHING DELAYS	11	26	6	
NUMBER OF MACHINERY ISSUES/REQUESTS NOT MET	0	0	0	

SEPTEMBER 2022

NUMBER	DATE	STEVE-DORE	VESSEL	VOYAGE	STARTING SHIFT	BERTH #	BERTH DELAY (HRS)	LAYDOWN	MACHINERY REQUEST RECEIVED	MACHINERY REQUEST FILLED	MACHINERY ISSUES	NOTES
1	0730/1*	QP	FWN RANGER	R005	EVE	2	24	B	YES	YES	NIL	Following departure of Gaja (Linx - Ocean 7)
2	1000/1	LINX	ARTEMIS LEADER	259	EVE	1	NIL	A, C	YES	YES	NIL	Following departure of Dover Hwy (Qube - K-Line).
3	1600/1	TML	BBC PACIFIC	302	DAY	2	128	B	YES	YES	NIL	Following departure of FWN Ranger (Qube - Orica). FWN Ranger was delayed departure due to engine issues.
4	0400/2	QP	MORNING LYNN	EE218	DAY	1	NIL	A, C, D	YES	YES	NIL	Following departure of Artemis Leader (Linx - NYK)
5	0930/2	QP	ORCA ACE	34	DAY	1	8	A, C, D	YES	YES	NIL	Following departure of Morning Lynn (Qube - WWO)
6	0030/3	LINX	BBC CARIBBEAN	19	DAY	2	144	B	YES	YES	NIL	Following departure of BBC Pacific (TML - BWS)
7	0400/4	QP	PAGANELLA	2267	DAY	1	NIL	A, C, M	YES	YES	NIL	
8	1400/5	QP	TALISMAN	EF216/AF248	MIDN	1	NIL	A, C	YES	YES	NIL	
9	1530/5	QP	SOFRANA SURVILLE	279S	MIDN	1	72	B	YES	YES	NIL	Following departure of Polaris Hwy (Qube - K-Line)
10	2000/6	QP	MORNING CHERRY	2268	DAY	1	NIL	A, C, D	YES	YES	NIL	
11	0800/7	LINX	O.T. IDEAAL	11	EVE	2	72	B	YES	YES	NIL	Following departure of BBC Caribbean (Linx - DSV)
12	0900/7	QP	BBC MINNESOTA	1036004	DAY	2	112	UHOOK	YES	YES	NIL	Following departure of OT Ideaal (Linx - OkTedi)
13	1200/7	QP	POLARIS HIGHWAY	66	DAY	1	16	A, D, M	YES	YES	NIL	Following departure of Morning Cherry (Qube - Armacup)
14	0330/8	QP	AAL HONG KONG	22004	MIDN	3	112	OS, F, J, H	YES	YES	NIL	Following departure of Chipol Baoan (Qube - BWS)
15	1500/9	QP	NEPTUNE BARCELONA	1	MIDN	1	24	A, C, D	YES	YES	NIL	Following departure of Sofrana Surville (Qube - Sofrana)
16	0130/10	QP	MAJESTIC MARINA		MIDN	2	208	OTP	YES	YES	NIL	Following departure of FWN Ranger (Qube - Orica) - return voyage
17	0800/10	LINX	HOEGH TRANSPORTER	161	MIDN	1	32	D	YES	YES	NIL	Following departure of Neptune Barcelona (Qube - MOL)
18	1500/10	TML	ARKADIA	2208N	EVE	2	64	B	YES	YES	NIL	Following departure of BBC Minnesota (Qube - BBC)
19	0200/11	QP	THEBEN	EF217	EVE	1	32	A, C	YES	YES	NIL	Following departure of Hoegh Transporter (Linx - Hoegh)
20	1530/11	QP	ATHENS HIGHWAY	122	EVE	1	40	A	YES	YES	NIL	Following departure of Theben (Qube - WWO)
21	0800/12	QP	MORNING CHANT	EE219	DAY	1	64	C	YES	YES	NIL	Following departure of Athens Hwy (Qube - K-Line)
22	2100/12	QP	MORNING CRYSTAL	2269	MIDN	1	64	A, C, D	YES	YES	NIL	Following departure of Morning Chant (Qube - WWO)
23	0100/13	QP	PRESTIGE ACE	181	DAY	1	96	A	YES	YES	NIL	Following departure of Morning Crystal (Qube - Armacup)
24	0730/13	LINX	TRANS FUTURE 5	143	MIDN	1	104	C, D	YES	YES	NIL	Following departure of Prestige Ace (Qube - MOL)
25	2100/13	QP	GREBE ARROW	0322	MIDN	3	88	NS	YES	YES	NIL	Following departure of AAL Hong Kong (Qube - AAL)
26	14-Sep	QP	FWN RANGER	R005	DAY	2	NIL	B	YES	YES	NIL	Vessel returned to complete loading Class 1 containers after experiencing engine issues
27	0400/14	QP	WISTERIA ACE	117	EVE	1	104	D, M	YES	YES	NIL	Following departure of Trans Future 5 (Linx - Toyofuji)
28	1600/14	TML	SAMOA CHIEF	2211S/2211N	DAY	2	16	B	YES	YES	NIL	Following departure of Arkadia (TML - Swire)
29	1330/15	LINX	UHL FLASH	22005	DAY	3	128	B	YES	YES	NIL	Following departure of Grebe Arrow (Qube - G2Ocean)
30	1800/17	LINX	HERCULES LEADER	89	EVE	1	40	A, C, D	YES	YES	NIL	Following departure of Wisteria Ace (Qube - MOL) and yard space
31	0100/19	QP	MORNING PEACE	EF218	EVE	1	32	A, C	YES	YES	NIL	Following departure of Hercules Leader (Linx - NYK)
32	0900/20	LINX	ERIDANUS LEADER	54	DAY	1	16	A, C	YES	YES	NIL	Following departure of Morning Peace (Qube - WWO)
33	2000/20	LINX	SAGA FRONTIER	49SZ	DAY	3	24	E	YES	YES	NIL	Following departure of UHL Flash (Linx - Ocean 7)
34	0400/21	LINX	HOEGH TOKYO	103	DAY	1	24	A, C	YES	YES	NIL	Following departure of Eridanus Leader (Linx - NYK)
35	1000/21	TML	ARDENNES	2202	DAY	3	256	OS, NS, F	YES	YES	NIL	Following departure of Sofrana Tourville (Qube - Sofrana)
36	1200/21	QP	IGUAZU HIGHWAY	41	DAY	1	40	A, C, D	YES	YES	NIL	Following departure of Hoegh Tokyo (Linx - Hoegh)
37	2000/22	QP	STONEWELL UNITY		MIDN	3	56	H, J	YES	YES	NIL	Following departure of Saga Frontier (Linx - Saga Welco)
38	0100/23	LINX	GREEN COVE	79	EVE	1	24	C, M	YES	YES	NIL	Following departure of Iguazu Highway (Qube - K-Line)
39	1100/23*	TML	BBC OCEAN	203S/203N	MIDN	2	136	B	YES	YES	NIL	Following departure of Kokopo Chief (TML - Swire)
40	1200/23*	TML	KOKOPO CHIEF	2213S/2215N	MIDN	2	8	B	YES	YES	NIL	Following departure of Majestic Marina (Qube - Infrabuild)

SEPTEMBER 2022

41	2030/23	QP	BELUGA ACE	38	EVE	1	64	A, C, D, M	YES	YES	NIL	Following departure of Green Cove (Linx - NYK) and yard space. Beluga Ace ex ULS required SPI at first Aust port of call. Original port rotation was to call BNE-PKL-MEL. Due to berth congestion, MOL chose to prioritise Prestige Ace over Beluga Ace. 12/9- MOL chose to change port rotation for Beluga Ace to PKL-MEL-BNE
42	0500/24	QP	SOFRANA TOURVILLE	259N	DAY	2	120	B	YES	YES	NIL	Following departure of BBC Ocean (TML - BWS)
43	2300/24	LINX	O.T. IDEAAL	12	EVE	1	176	B	YES	YES	NIL	Following departure of Dover Hwy (Qube - K-Line).
44	0730/27	LINX	TRANS FUTURE 6	140	MIDN	1	8	A	YES	YES	NIL	Following departure of Beluga Ace (Qube - MOL)
45	1700/27	QP	EMERALD ACE	80	MIDN	1	24	A, C, D	YES	YES	NIL	Following departure of Trans Future 6 (Linx - Toyofuji)
46	1300/29	QP	DOVER HIGHWAY	93	DAY	1	8	A, C	YES	YES	NIL	Following departure of Emerald Ace (Qube - MOL)

Legend - Berth # and Laydown

	Primary
	Secondary
	Tertiary

SUMMARY	LINX	QUBE	TML	COMMENT
TOTAL VESSELS FOR MONTH	13	27	6	
GREEN BERTH (Primary)	13	27	6	
ORANGE BERTH (Secondary)	0	0	0	
RED BERTH (Tertiary)	0	0	0	
GREEN LAYDOWN (Primary)	8	16	6	
ORANGE LAYDOWN (Secondary)	5	11	0	
RED LAYDOWN (Tertiary)	0	0	0	
NUMBER OF BERTHING DELAYS	12	22	6	
NUMBER OF MACHINERY ISSUES/REQUESTS NOT MET	0	0	0	

OCTOBER 2022

NUMBER	DATE	STEVE-DORE	VESSEL	VOYAGE	STARTING SHIFT	BERTH #	BERTH DELAY (HRS)	LAYDOWN	MACHINERY REQUEST RECEIVED	MACHINERY REQUEST FILLED	MACHINERY ISSUES	NOTES
1	0300/3	QP	STAR ISMENE	0522	DAY	2	24	OS, F	YES	YES	NIL	
2	1400/3	LINX	JENS OLDENDORFF	2204530	EVE	3	88	UHOOK	YES	YES	NIL	Awaiting departure of "Ardennes" (TML-Swire) and "Dong-A Metis" (Qube - MOL)
3	1800/5	QP	AAL SHANGHAI	22007	MIDN	3	144	OS, J	YES	YES	NIL	Awaiting departure of "Jens Oldendorff" (Linx - BWS)
4	2100/5	LINX	ARTEMIS LEADER	111	DAY	1	NIL	A, C, D	YES	YES	NIL	
5	1500/6	QP	DONG-A METIS	8	MIDN	1	NIL	A, C, D, M	YES	YES	NIL	
6	1100/6	QP	ARC COMMITMENT	EE220	DAY	1	8	C, D, M	YES	YES	NIL	Awaiting departure of Artemis Leader (Linx - NYK). Included Tamesis Brisbane cargo loaded in Melbourne.
7	1500/7	QP	PAGLIA	2270	EVE	1	16	C, D, FLYOVE	YES	YES	NIL	Awaiting departure of Arc Commitment (Qube - WWO)
8	1300/7	QP	MANDARIN ARROW	0722	EVE	3	160	NS, H, J	YES	YES	NIL	Awaiting departure of AAL Shanghai (Qube - AAL)
9	1800/7	QP	TURANDOT	2271	MIDN	1	48	A, C, D	YES	YES	NIL	Awaiting departure of Paglia (Qube - Armacup)
10	8-Oct	QP	DARRA		DAY	3	NIL	UHOOK	YES	YES	NIL	
11	0900/8	QP	TAI XING	HF2201	MIDN	3	200	UHOOK	YES	YES	NIL	Awaiting departure of Mandarin Arrow (Qube - G)
12	1730/8	QP	SOFRANA SURVILLE	280S	MIDN	2	NIL	B	YES	YES	NIL	
13	2330/8	LINX	THEMIS LEADER	32	MIDN	1	40	A, C, D	YES	YES	NIL	Awaiting departure of Turandot (Qube - Armacup)
14	0510/9	QP	CARNATION ACE	79	MIDN	1	32	A, C, D	YES	YES	NIL	Awaiting departure of Themis Leader (Linx - NYK)
15	0540/9	LINX	APHRODITE LEADER	31	MIDN	1	80	C, D	YES	YES	NIL	Awaiting departure of Carnation Ace (Qube - MOL)
16	0300/10	QP	YANGTZE FLOURISH	2206	MIDN	2	208	F	YES	YES	NIL	Awaiting departure of Melanesian Chief(TML - Swire) from Berth 2 and Hoegh Trigger (Linx - Hoegh) from Berth 1
17	1200/10	TML	PORT VILA CHIEF	2212S/2212N	DAY	2	8	B	YES	YES	NIL	Awaiting departure of Sofrana Surville (Qube - Sofrana). Original ETA was 0900/8PS; vessel slowed due to berth congestion
18	1400/10	QP	ANIARA	EE221	EVE	1	64	A, C	YES	YES	NIL	Awaiting departure of Aphrodite Leader (Linx - NYK)
19	1400/11	LINX	TRANS FUTURE 7	140	MIDN	1	72	A, C	YES	YES	NIL	Awaiting departure of Aniara (Qube - WWO)
20	1230/12	TML	ARKADIA	2208S/2209N	EVE	2	16	B	YES	YES	NIL	Awaiting departure of Port Vila Chief (TML - Swire)
21	1400/13	QP	TIRRANNA	EF219	EVE	1	56	A	YES	YES	NIL	Awaiting departure of Trans Future 7 (Linx - Toyofuji)
22	0900/14	QP	ORCA ACE	35	EVE	1	64	A, D	YES	YES	NIL	Awaiting departure of Tirranna (Qube - WWO)
23	1730/14	QP	BBC GANGES	110065	DAY	3	192	NS	YES	YES	NIL	Awaiting departure of Tai Xing (Qube - BWS)
24	1530/15	LINX	HOEGH TRIGGER	40	DAY	1	80	A, C, D	YES	YES	NIL	Awaiting departure of Orca Ace (Qube - MOL)
25	0600/16	QP	THEMIS	NZ205	EVE	1	136	A, C	YES	YES	NIL	Awaiting departure of Morning Cherry (Qube - Armacup)
26	1230/16	QP	LEO SPIRIT	57	MIDN	1	160	A, C, D, M	YES	YES	NIL	Awaiting departure of Themis (Qube - WWO)
27	1600/16	QP	MORNING CHERRY	2272	MIDN	1	96	A, C, D	YES	YES	NIL	Awaiting departure of Hoegh Trigger (Linx- Hoegh)
28	1600/16	QP	MELANESIAN CHIEF	2216N	DAY	2	8	B	YES	YES	NIL	Awaiting departure of Tirranna (Qube - WWO) from Berth 1 / 2
29	1330/17	LINX	BBC MARMARA	01	EVE	2	136	B	YES	YES	NIL	Awaiting departure of BBC Ganges (Linx - BBC)
30	1130/18	TML	FENGTIEN	2206	DAY	3	128	NS, OS, J, H	YES	YES	NIL	Awaiting departure of Euphrates Highway (Qube - K-Line)
31	1830/18	QP	CHIPOL BAOAN	HF2201	MIDN	3	208	UHOOK	YES	YES	NIL	Awaiting departure of Hercules Leader (Linx - NYK)
32	0130/19	QP	EUPHRATES HIGHWAY	93	EVE	3	104	E	YES	YES	NIL	Awaiting completion & warping of BBC Ganges (Qube - BBC)
33	1430/19	QP	MORNING CRYSTAL	2273	MIDN	1	120	A, C	YES	YES	NIL	Awaiting departure of Leo Spirit (Qube - MOL)
34	2359/19	QP	MORNING CELINE	EE223	MIDN	1	136	A, C, D	YES	YES	NIL	Awaiting departure of Morning Crystal (Qube - Armacup)
35	1300/20	QP	AMBER ARROW	138	EVE	1	136	A, C, D, M	YES	YES	NIL	Awaiting departure of Morning Celine (Qube - WWO)
36	1400/20*	LINX	O.T. IDEAL	13	EVE	2	112	B	YES	YES	NIL	Awaiting departure of BBC Marmara (Linx - BWS)
37	1200/21	LINX	HERCULES LEADER	90	MIDN	3	112	E, W	YES	YES	NIL	Awaiting departure of Fengtien (TML - Swire)
38	1700/21	QP	GLOVIS COMPANION	4	EVE	1	136	A, C	YES	YES	NIL	Awaiting departure of Amber Arrow (Qube - K-Line)
39	1600/21	QP	JIN WANG LING	59	DAY	2	128	WHARF	YES	YES	NIL	Awaiting departure of OT Ideal (Linx - OkTedi)
40	0900/25	QP	AAL FREMANTLE	22007	MIDN	3	56	OS, F	YES	YES	NIL	Awaiting departure of JinWang Ling (Qube - Hastings)
41	1300/25	TML	TS BRAVO	2201	DAY	3	200	NS, H, J	YES	YES	NIL	Awaiting departure of Nabucco (Qube - WWO)
42	1600/25	LINX	ERIDANUS LEADER	55	DAY	1	72	A, C, D	YES	YES	NIL	Awaiting departure of New Century 1 (Linx - Toyofuji)
43	1600/25	LINX	NEW CENTURY 1	175	DAY	1	56	C	YES	YES	NIL	Awaiting departure of Glovis Companion (Qube - MOL)
44	0200/26	QP	COREWISE OL	222105	DAY	2	192	E, F, OTP	YES	YES	NIL	Awaiting departure of Bronze Lady (Qube - Orica). 12 shifts
45	1000/26	QP	ATHENS HIGHWAY	123	EVE	1	96	A, C, D, M	YES	YES	NIL	Awaiting departure of Eridanus Leader (Linx - NYK)
46	0100/27	TML	BBC PACIFIC	303S/303N	EVE	2	56	B	YES	YES	NIL	Awaiting departure of AAL Fremantle (Qube - AAL)
47	0400/28	QP	ADRIATIC HIGHWAY	132	MIDN	1	88	A, C, D, M	YES	YES	NIL	Awaiting departure of Athens Highway (Qube - K-Line)
48	2100/28	QP	MARTORELL	154	MIDN	1	88	A, C, D, M	YES	YES	NIL	Awaiting departure of Adriatic Highway (Qube - K-Line)
49	0600/29	QP	NABUCCO	EF220	DAY	3	88	E	YES	YES	NIL	Awaiting departure of Chipol Baoan (Qube - BWS)
50	0700/29	TML	TONGA CHIEF	2213S/2213N	DAY	2	40	OS	YES	YES	NIL	Awaiting departure of BBC Pacific (TML - BWS). Slowed to 0500/30th
51	1130/29	TML	KOKOPO CHIEF	2215S/2217N	EVE	2	64	B	YES	YES	NIL	Awaiting departure of Tonga Chief (TML - Swire)
52	29-Oct	QP	BRONZE LADY	2208	EVE	2	NIL	B	YES	YES	NIL	
53	0034/30	QP	MERLIN ARROW	0522	EVE	3	224	G, OS, W	YES	YES	NIL	Awaiting departure of TS Bravo (TML - Swire)
54	0340/30	QP	YANGTZE ETERNAL	2208	DAY	2	45	E, F, OS, OTP	YES	YES	NIL	Awaiting departure of OT Ideal (Linx - OkTedi)
55	1430/30	QP	STONEWELL UNITY	HF2202	MIDN	3	104	UHOOK	YES	YES	NIL	Awaiting departure of Merlin Arrow (Qube - G2Ocean)
56	2330/31	QP	TUGELA	EF222	EVE	1	64	C	YES	YES	NIL	Awaiting departure of Martorell (Qube - MOL)

SUMMARY LINX QUBE TML COMMENT

OCTOBER 2022

Legend - Berth # and Laydown

- Primary
- Secondary
- Tertiary

TOTAL VESSELS FOR MONTH	11	38	7	
<i>GREEN BERTH (Primary)</i>	11	38	7	
<i>ORANGE BERTH (Secondary)</i>	0	0	0	
<i>RED BERTH (Tertiary)</i>	0	0	0	
<i>GREEN LAYDOWN (Primary)</i>	6	22	7	
<i>ORANGE LAYDOWN (Secondary)</i>	5	15	0	
<i>RED LAYDOWN (Tertiary)</i>	0	1	0	
NUMBER OF BERTHING DELAYS	10	34	7	
NUMBER OF MACHINERY ISSUES/REQUESTS NOT MET	0	0	0	

NOVEMBER 2022

NUMBER	DATE	STEVE-DORE	VESSEL	VOYAGE	STARTING SHIFT	BERTH #	BERTH DELAY (HRS)	LAYDOWN	MACHINERY REQUEST RECEIVED	MACHINERY REQUEST FILLED	MACHINERY ISSUES	NOTES
1	0800/1	LINX	EQUULEUS LEADER	34	EVE	1	88	A, C, M	YES	YES	NIL	Following departure of Tugela (Qube - WWO)
2	1600/2	QP	AAL SINGAPORE	22008	DAY	3	392	NS	YES	YES	NIL	Following departure of Stonewell Unity (Qube - BWS)
3	0100/4	QP	ONYX ARROW	12-Apr	EVE	1	56	A, C, M	YES	YES	NIL	Following departure of Equuleus Leader (Linx - NYK)
4	0500/4	QP	TREASURE	NZ206	DAY	1	64	A, C, D, M	YES	YES	NIL	Following departure of Onyx Arrow (Qube - K-Line)
5	2100/4	QP	IRIS HARMONY		EVE	3	360	H, J, W	YES	YES	NIL	Following departure of AAL Singapore (Qube - AAL)
6	2000/5	TML	ARKADIA	2209S/2210N	DAY	2	48	B	YES	YES	NIL	Following departure of Corewise OL (Qube - WSS)
7	1300/6	QP	DOVER HIGHWAY	94	DAY	1	24	A, C, D	YES	YES	NIL	Following departure of Treasure (Qube - WWO)
8	0800/7	QP	SOFRANA SURVILLE	281N	DAY	2	64	B	YES	YES	NIL	Following departure of Arkadia (TML - Swire)
9	0300/8	LINX	TRANS FUTURE 5	144	MIDN	1	48	A, C, D	YES	YES	NIL	Following departure of Dover Highway (Qube - K-Line)
10	0200/9	QP	DIGNITY ACE	71	EVE	1	8	A, C, D, M	YES	YES	NIL	Following departure of Trans Future 5 (Linx - Toyofuji)
11	0600/10	QP	DON JUAN	2274	DAY	1	96	A, C, M	YES	YES	NIL	Following departure of Artemis Leader (Linx - NYK)
12	1230/10	LINX	O.T. IDEAAL	14	MIDN	2	24	B	YES	YES	NIL	Following departure of Sofrana Surville (Qube - Sofrana)
13	1300/10	QP	BELUGA ACE	39	MIDN	1	NIL	A, C	YES	YES	NIL	
14	1800/10	LINX	HOEGH OSLO	107	MIDN	1	24	C	YES	YES	NIL	Following departure of Beluga Ace (Qube - MOL)
15	0500/11	LINX	ARTEMIS LEADER	113	MIDN	1	32	A, C, D	YES	YES	NIL	Following departure of Hoegh Oslo (Linx - Hoegh)
16	0800/11	QP	DIVINE ACE	80	DAY	1	88	A, C, D	YES	YES	NIL	Following departure of Don Juan (Qube - Armacup)
17	1500/13	QP	CLOVER ACE	98	DAY	1	56	A	YES	YES	NIL	Following departure of Divine Ace (Qube - MOL)
18	1500/13	QP	BBC CORAL	1120018	MIDN	1	72	B	YES	YES	NIL	Following departure of Clover Ace (MOL)
19	2230/13	QP	LANGEOOG	H007	DAY	1	96	B	YES	YES	NIL	Following departure of BBC Coral (Qube - BBC)
20	1100/15	QP	SAMOA CHIEF	2214S/2214N	MIDN	2	72	B	YES	YES	NIL	Following departure of Yangtze Eternal (Qube - Pioneer)
21	0600/17	LINX	MDT1801		EVE	2	96	B	YES	YES	NIL	Following departure of Melanesian Chief (TML - Swire)
22	0800/17	TML	MELANESIAN CHIEF	2216S/2218N	EVE	2	72	B	YES	YES	NIL	Following departure of Samoa Chief (TML - Swire)
23	1730/17	TML	POWAN	2209	MIDN	3	168	OS, F, G, H	YES	YES	NIL	Following departure of Iris Harmony (Qube - Infrabuild)
24	0430/18	LINX	GRAND LEGACY	94	DAY	1	24	C, D	YES	YES	NIL	Following departure of Dorado Leader (Linx - NYK). NYK chose to prioritise Dorado Leader over Grand Legacy
25	0500/18	LINX	HOEGH SEOUL	124	DAY	1	72	A, C	YES	YES	NIL	Following departure of Grand Legacy (Linx - NYK)
26	1200/18	LINX	DORADO LEADER	115	DAY	1	8	D	YES	YES	NIL	Following departure of Langeoog (Qube - Orica)
27	1215/19	QP	RCC SHANGHAI	9	EVE	2	64	D, M	YES	YES	NIL	Following departure of MDT1801 (Linx - Bahgwan)
28	1415/20	QP	CARNATION ACE	36	DAY	1	80	A, D, M	YES	YES	NIL	Following departure of Trans Future 6 (Linx - Toyofuji). Carnation Ace called TSV and BSD updated to fog in Brisbane; Lay up at Coal Berth 0400hrs/22nd; 0600-1200/22nd fogging; re-inspection 1600hrs/22nd
29	0700/21	QP	SEVEN SEAS HIGHWAY	137	EVE	1	24	A, C, D, M	YES	YES	NIL	Following departure of Hoegh Seoul (Linx - Hoegh)
30	1800/21	LINX	TRANS FUTURE 6	141	EVE	1	40	C	YES	YES	NIL	Following departure of Seven Seas Hwy (Qube - K-Line)
31	1700/22	TML	BBC OCEAN	204S/204N	DAY	2	8	B	YES	YES	NIL	Following departure of RCC Shanghai (Qube - MOL)
32	1700/23	LINX	CL LINDY		EVE	2	88	UHOOK	YES	YES	NIL	Following departure of BBC Marmara (Linx - DSV)
33	2000/23	QP	MORNING CHERRY	2275	EVE	1	72	A, D, M	YES	YES	NIL	Following departure of Orca Ace (Qube - MOL)
34	0500/24	QP	RCC TIANJIN	8	MIDN	1	16	A, C	YES	YES	NIL	Following departure of Carnation Ace (Qube - MOL)
35	1800/24	QP	WEAVER ARROW	0622	DAY	3	56	F, J, NS, OTP	YES	YES	NIL	Following departure of Powan (TML - Swire)
36	1100/25	LINX	BBC MARMARA	02	EVE	2	NIL	B	YES	YES	NIL	
37	1430/25	QP	ORCA ACE	36	EVE	1	NIL	C, D	YES	YES	NIL	
38	1630/26	QP	MORNING CRYSTAL	2276	EVE	1	64	A, C, D, M	YES	YES	NIL	Following departure of Morning Cherry (Qube - Armacup)
39	1800/26	LINX	HERCULES LEADER	91	EVE	1	88	A, C, D, M	YES	YES	NIL	Following departure of Morning Crystal (Qube - Armacup)

NOVEMBER 2022

40	1200/28	LINX	ULTRA FITZ ROY	01	EVE	3	40	G	YES	YES	NIL	Following departure of Weaver Arrow (Qube - G2Ocean) and MUA AGM.
41	1700/28	LINX	O.T. IDEAAL	15	EVE	2	64	B	YES	YES	NIL	Following departure of CL Lindy (Linx - BWS)
42	1900/28	LINX	GOLIATH LEADER	105	MIDN	1	96	A, C, D, M	YES	YES	NIL	Following departure of Hercules Leader (Linx - NYK). Berthing at Coal Terminal 1130/29 to do fogging and inspection
43	1700/29	QP	BLUE RIDGE HIGHWAY	118	EVE	3	64	E	YES	YES	NIL	Following departure of Ultra Fitz Roy (Linx - IOS)
44	30-Nov	LINX	EEMSLIFT NADINE	22BNE0092	MIDN	1	96	B	YES	YES	NIL	Following departure of Jasper Arrow (Qube - K-Line)

Legend - Berth # and Laydown

	Primary
	Secondary
	Tertiary

SUMMARY	LINX	QUBE	TML	COMMENT
TOTAL VESSELS FOR MONTH	17	23	4	
GREEN BERTH (Primary)	17	23	4	
ORANGE BERTH (Secondary)	0	0	0	
RED BERTH (Tertiary)	0	0	0	
GREEN LAYDOWN (Primary)	10	10	4	
ORANGE LAYDOWN (Secondary)	7	13	0	
RED LAYDOWN (Tertiary)	0	0	0	
NUMBER OF BERTHING DELAYS	16	21	4	
NUMBER OF MACHINERY ISSUES/REQUESTS NOT MET	0	0	0	

DECEMBER 2022

NUMBER	DATE	STEVE-DORE	VESSEL	VOYAGE	STARTING SHIFT	BERTH #	BERTH DELAY (HRS)	LAYDOWN	MACHINERY REQUEST RECEIVED	MACHINERY REQUEST FILLED	MACHINERY ISSUES	NOTES
1	1130/1	QP	JASPER ARROW	122	DAY	1	56	M	YES	YES	NIL	Awaiting departure of Goliath Leader (Linx - NYK)
2	1600/1	LINX	ERIDANUS LEADER	56	MIDN	1	96	A, C, D, M	YES	YES	NIL	Awaiting departure of Eemslift Nadine (Linx - DSV)
3	2200/1	TML	ARKADIA	2210S/2211N	DAY	2	24	B	YES	YES	NIL	Awaiting departure of OT Ideaal (Linx - OKTedi)
4	1800/2	QP	CHIPOL DONGHAI	042	MIDN	3	168	UHOOK	YES	YES	NIL	Awaiting departure of Jacob Oldendorff (Linx - BWS)
5	0800/3	TML	PORT VILA CHIEF	2215S/2215N	DAY	2	16	B	YES	YES	NIL	Awaiting departure of Arkadia (TML - Swire)
6	0100/4	QP	BOHEME	EZ205	MIDN	1	64	A, D	YES	YES	NIL	Awaiting departure of Eridanus Leader (Linx - NYK)
7	1200/4	QP	TIJUCA	EF223	MIDN	1	64	A, C	YES	YES	NIL	Awaiting departure of Boheme (Qube - WWO)
8	1500/4	LINX	JACOB OLDENDORFF	2205474	EVE	3	NIL	UHOOK	YES	YES	NIL	
9	0200/6	QP	AMBER ARROW	139	MIDN	1	64	A	YES	YES	NIL	Awaiting departure of Tijuca (Qube - WWO)
10	0930/6	LINX	TRANS FUTURE 7	141	EVE	1	72	A, C, D	YES	YES	NIL	Awaiting departure of Amber Arrow (Qube - K-Line)
11	0940/7	TML	KOKOPO CHIEF	2217S/2219N	MIDN	2	80	B	YES	YES	NIL	Awaiting departure of Sofrana Surville (Qube - Sofrana)
12	0400/9	QP	SOFRANA SURVILLE	282N	DAY	2	NIL	B	YES	YES	NIL	
13	0600/9	TML	BBC AUSTRALIA	105S	MIDN	2	56	B	YES	YES	NIL	Awaiting departure of Kokopo Chief (TML - Swire)
14	1400/9	QP	BELUGA ACE	40	EVE	1	16	M, L	YES	YES	NIL	Awaiting yard space
15	0100/9	QP	TONSBERG	EE224	EVE	1	128	A, C	YES	YES	NIL	Awaiting departure of Dover Highway (Qube - K-Line)
16	1400/10	QP	FWN RANGER	R006	EVE	2	64	B	YES	YES	NIL	Awaiting departure of BBC Australia (TML - BWS)
17	0600/11	QP	DOVER HIGHWAY	95	DAY	1	16	A, C, D, M	YES	YES	NIL	Awaiting departure of Beluga Ace (Qube - MOL)
18	0700/11	QP	TYSLA	EF225	EVE	1	88	A, C	YES	YES	NIL	Awaiting departure of Tonsberg (Qube - WWO)
19	0900/11	QP	AAL HONG KONG	22006	DAY	3	64	NS, F	YES	YES	NIL	Awaiting departure of Chipol Donghai (Qube - BWS)
20	2200/11	LINX	MSC IMMACOLATA	622	DAY	1	168	A, C, D	YES	YES	NIL	Awaiting departure of Lydden (Qube - K-Line). Lydden was backloading transhipments ex Dover Highway to make sufficient space for MSC Immacolata. Vessel fogged @ Patricks but had to leave on 16th. 14th - DAFF advised that Teslas from Deck 9 down had seed detected when walking decks. All cars will be held on discharge. B/Ls are all entered as one lines. 185 cars on Deck 13 can be segregated as no seed on these cars.
21	0830/14	QP	VIKING PASSAMA	2277	DAY	1	136	A, C	YES	YES	NIL	Awaiting departure of MSC Immacolata (Linx - Grimaldi). Vessel fogged at QBT and then was ordered to re-fog 30mins prior to departure. Vessel had to go to anchorage and then berth at Coal Berth AM/16th when berth was clear. Vessel passed 2nd fogging on 17th.
22	0700/15	QP	SOFRANA TOURVILLE	260S	DAY	2	16	B	YES	YES	NIL	Awaiting departure of Tysla (Qube - WWO)
23	0745/16	LINX	ATLAS LEADER	94	EVE	1	NIL	A, C, M	YES	YES	NIL	Awaiting departure of Tysla (Qube - WWO)
24	1800/16	QP	LYDDEN	16	EVE	1	16	A, C, D, M	YES	YES	NIL	Awaiting departure of Atlas Leader (Linx - NYK)
25	1830/16	QP	YANGTZE GRACE	2207	MIDN	3	24	H, J, NS	YES	YES	NIL	Awaiting departure of AAL Hong Kong (Qube - AAL)
26	1100/17	LINX	CL ALICE	2206081	EVE	3	136	UHOOK	YES	YES	NIL	Awaiting departure of Jan Oldendorff (Linx - BWS). Vessel moved from pilotage to seek refuge from adverse weather and was unable to return in time to berth ahead of Jan Oldendorff. Vessel encountered issues with defective ships cranes when alongside and had to use shore cranes.
27	0001/18	QP	AAL FREMANTLE	22009	DAY	2	40	OS, OTP	YES	YES	NIL	Awaiting departure of OT Ideaal (Linx - OKTedi). 16th - Port of Newcastle closed due to heavy swell; AAL unsure if vessel would make it here for working on Sun 18th so decided not to book any labour for weekend, so OT Ideaal was next in line and able to berth.
28	0800/18	LINX	O.T. IDEAL	16	EVE	2	NIL	B	YES	YES	NIL	
29	2200/18	QP	ADRIATIC HIGHWAY	133	DAY	1	48	A, C	YES	YES	NIL	Awaiting departure of Viking Passama (Qube - Armacup)
30	0200/19	LINX	ARTEMIS LEADER	114	MIDN	1	88	A, C, D	YES	YES	NIL	Awaiting departure of Adriatic Hwy (Qube - K-Line). Berthed at QBT on 21/12 and passed SPI.
31	1430/20	LINX	EQUULEUS LEADER	38	MIDN	1	144	A, C, M	YES	YES	NIL	Awaiting departure of Artemis Leader (Linx - NYK). Berthing at Hutchinson on 22nd for SPI and looking to move across to AAT as soon as Artemis finished.
32	1600/20	QP	GRAND PACE	1	DAY	3	32	E	YES	YES	NIL	Awaiting departure of Yangtze Grace (Qube - Pioneer Shipping). Sufficient yard space for this vessel only at Berth 3.
33	1800/20	QP	THALATTA	EF225	DAY	1	168	C, D, M	YES	YES	NIL	Awaiting departure of Equuleus Leader (Linx - NYK). Berthed at Coal Berth on arrival and passed SPI on 21/12.

DECEMBER 2022

34	0700/21	LINX	JAN OLDENDORFF	2206470	EVE	3	40	UHOOK	YES	YES	NIL	Awaiting departure of Grand Pace (Qube - MOL)
35	2200/21	TML	MELANESIAN CHIEF	2301N	EVE	2	88	B	YES	YES	NIL	Awaiting departure of BBC Pacific (TML - BWS)
36	0035/22	TML	BBC PACIFIC	304S/304N	MIDN	2	NIL	B	YES	YES	NIL	
37	2100/22	LINX	BBC MARMARA	03	EVE	2	104	B	YES	YES	NIL	Awaiting departure of Melanesian Chief (TML - Swire). Vessel delayed in Newcastle.
38	AM/24	LINX	MDT1801		DAY	2	NIL	B	YES	YES	NIL	
39	1900/24	QP	ONYX ARROW	104	DAY	1	96	A, C	YES	YES	NIL	Awaiting departure of Thalatta (Qube - WWO)
40	0301/25	QP	TORRENS	EE227	MIDN	1	112	A, M	YES	YES	NIL	Awaiting departure of Onyx Arrow (Qube - K-Line)
41	0306/25	QP	BRASILIA HIGHWAY	142	MIDN	1	136	A, C, D, M	YES	YES	NIL	Awaiting departure of Torrens (Qube - WWO)
42	1500/25	LINX	SAGA EXPLORER	56SZ	MIDN	3	192	NS	YES	YES	NIL	Awaiting departure of CL Alice (Linx - BWS)
43	0342/26	QP	VIKING DESTINY	1	EVE	1	200	A, C, M	YES	YES	NIL	Awaiting departure of Brasilia Highway (Qube - K-Line) and yard space.
44	1312/26	LINX	DREAM JASMINE	24	EVE	1	208	A, C	YES	YES	NIL	Awaiting departure of Viking Destiny (Qube - MOL)
45	0500/27	QP	DON JUAN	2278	EVE	2	216	A, C	YES	YES	NIL	Awaiting departure of AAL Shanghai (Qube - AAL)
46	1100/27	QP	SOFRANA SURVILLE	283N	MIDN	2	56	B	YES	YES	NIL	Awaiting departure of BBC Marmara (Linx - DSV)
47	1030/29	LINX	CAPRICORNUS LEADER	54	EVE	1	168	M	YES	YES	NIL	Awaiting departure of Dream Jasmine (Linx - Toyofuji) and yard space.
48	0100/31	TML	TONGA CHIEF	2216S/2216N	MIDN	2	40	B	YES	YES	NIL	Awaiting departure of MDT1801 (Linx - Bahwan)
49	1800/31	QP	MORNING CRYSTAL	2279	EVE	1	136	A, C	YES	YES	NIL	Awaiting departure of Capricornus Leader (Linx - NYK)

Legend - Berth # and Laydown

	Primary
	Secondary
	Tertiary

SUMMARY	LINX	QUBE	TML	COMMENT
TOTAL VESSELS FOR MONTH	<u>15</u>	<u>27</u>	<u>7</u>	
GREEN BERTH (Primary)	15	27	7	
ORANGE BERTH (Secondary)	0	0	0	
RED BERTH (Tertiary)	0	0	0	
GREEN LAYDOWN (Primary)	8	18	7	
ORANGE LAYDOWN (Secondary)	7	8	0	
RED LAYDOWN (Tertiary)	0	1	0	
NUMBER OF BERTHING DELAYS	11	26	6	
NUMBER OF MACHINERY ISSUES/REQUESTS NOT MET	0	0	0	

Attachment A

KPI 6

Allocation of first point of rest

Port Kembla

Jul 1 – December 31st, 2022

NUMBER	DATE	STEVE-DORE	VESSEL	VOYAGE	STARTING SHIFT	BERTH #	BERTH DELAY	LAYDOWN	MACHINERY REQUEST RECEIVED	MACHINERY REQUEST FILLED	MACHINERY ISSUES	NOTES
1	1/07/2022	QUBE	DON JUAN	2211	DAY	105	N	D BLOCK,F BLOCK,L BLOCK AND P SHED	Y	Y		VESSEL BERTHED AT 105 DUE TO 106 AND 107 BEING OCCUPIED.
2	1/07/2022	QUBE	MORNING CRYSTAL	2262	EVE	106	N	D BLOCK, F BLOCK,H BLOCK, K BLOCK, L BLOCK AND P SHED	Y	Y		
3	2/07/2022	LINX	APHRODITE LEADER	029	NIGHT	105	N	B BLOCK,D BLOCK,H BLOCK AND P SHED	Y	Y		VESSEL BERTHED AT 105 DUE TO 106 AND 107 BEING OCCUPIED.
4	5/07/2022	QUBE	SIRIUS HIGHWAY	045	EVE	105	N	B BLOCK, D BLOCK,H BLOCK, P SHED AND N BLOCK	Y	Y		VESSEL BERTHED AT 105 DUE TO 106 AND 107 BEING OCCUPIED.
5	5/07/2022	LINX	HOEGH NEW YORK	134	EVE	106	N	C BLOCK,F BLOCK,H BLOCK,L BLOCK AND P SHED	Y	Y		C BLOCK UTILISED AS NOT ENOUGH SPACE IN B,D,F OR H
6	6/07/2022	QUBE	MORNING CARA	001	EVE	105	N	B BLOCK, D BLOCK AND C BLOCK	Y	Y		C BLOCK UTILISED AS NOT ENOUGH SPACE IN B,D,F OR H.VESSEL BERTHED AT 105 DUE TO 106 AND 107 BEING OCCUPIED.
7	7/07/2022	QUBE	MORNING PRIDE	OE210	DAY	105	N	B BLOCK AND D BLOCK	Y	Y		VESSEL BERTHED AT 105 DUE TO 106 AND 107 BEING OCCUPIED.
8	8/07/2022	LINX	ERIDANUS LEADER	052	NIGHT	105	N	A BLOCK, C BLOCK, B BLOCK, L BLOCK, P SHED AND N BLOCK	Y	Y		A AND C BLOCK UTILISED AS NOT ENOUGH SPACE IN B,D,F OR H.VESSEL BERTHED AT 105 DUE TO 106 AND 107 BEING OCCUPIED.
9	8/07/2022	QUBE	ATHENS HIGHWAY	120	DAY	106	N	C BLOCK,D BLOCK,F BLOCK,H BLOCK AND L BLOCK	Y	Y		C BLOCK UTILISED AS NOT ENOUGH SPACE IN B,D,F OR H
10	9/07/2022	QUBE	MANON	OE211	NIGHT	107	N	107CON,Q BLOCK,GSHED AND LINKSPAN	Y	Y		
11	9/07/2022	QUBE	AAL JUPITER	22003	NIGHT	106	N	G SHED	Y	Y		
12	9/07/2022	LINX	HERCULES LEADER	087	DAY	105	N	B BLOCK,D BLOCK,F BLOCK,H BLOCK, K BLOCK, PSHED AND N BLOCK	Y	Y		VESSEL BERTHED AT 105 DUE TO 106 AND 107 BEING OCCUPIED.
13	9/07/2022	QUBE	AFRICAN GANNET	10993	DAY	103	N	DIRECT TO HOOK	Y	Y		
14	10/07/2022	QUBE	TRANS FUTURE 5	142	NIGHT	107	N	A BLOCK,C BLOCK,O BLOCK,Q BLOCK AND LINKSPAN	Y	Y		
15	10/07/2022	LINX	HOEGH ST PETERSBURG	75	EVE	105	N	F BLOCK,H BLOCK,K BLOCK, M BLOCK, PSHED AND N BLOCK	Y	Y		VESSEL BERTHED AT 105 DUE TO 106 AND 107 BEING OCCUPIED.
16	11/07/2022	QUBE	TORONTO	EF212	EVE	107	N	107CON, I BLOCK, EBLK,C BLOCK,ESHED AND LINKSPAN	Y	Y		VESSEL OPERATIONS DELAYED BY 8HRS DUE TO YARD CONGESTION
17	12/07/2022	LINX	HOEGH SEOUL	122	EVE	105	N	B BLOCK,DBLOCK,F BLOCK,ESHED, H BLOCK, M BLOCK,P SHED AND N BLOCK	Y	Y		VESSEL BERTHED AT 105 DUE TO 106 AND 107 BEING OCCUPIED.
18	13/07/2022	QUBE	RCC PASSION	002	NIGHT	107	N	A BLOCK AND C BLOCK	Y	Y		
19	13/07/2022	LINX	HOEGH BANGKOK	69	EVE	105	N	B BLOCK,D BLOCK,F BLOCK,ESHED, H BLOCK, PSHED AND N BLOCK	Y	Y		VESSEL BERTHED AT 105 DUE TO 106 AND 107 BEING OCCUPIED.
20	13/07/2022	QUBE	MISSION REVIVAL	17823	EVE	103	N	DIRECT TO HOOK	Y	Y		
21	14/07/2022	QUBE	THALATTA	EF211	NIGHT	107	N	107CON,O BLOCK,Q BLOCK, ESHED AN LINKSPAN	Y	Y		
22	14/07/2022	QUBE	CHIPOL TAIHU	041	NIGHT	106	N	DIRECT TO TRUCK - TO TQ	Y	Y		
23	15/07/2022	QUBE	GALAXY ACE	075	DAY	107	N	I BLOCK,A BLOCK,C BLOCK, O BLOCK AND Q BLOCK	Y	Y		
24	16/07/2022	QUBE	NOCC ATLANTIC	EE214	DAY	105	N	F BLOCK,H BLOCK,M BLOCK, P SHED AND N BLOCK	Y	Y		VESSEL OPERATIONS DELAYED BY 16HRS DUE TO CONGESTION. VESSEL BERTHED AT 105 DUE TO 106 AND 107 BEING OCCUPIED.
25	16/07/2022	LINX	DIONYSOS LEADER	098	EVE	107	N	I BLOCK, 107CON,A BLOCK,C BLOCK,Q BLOCK AND ESHED	Y	Y		
26	18/07/2022	LINX	HERMES LEADER	054	EVE	107	N	A BLOCK,B BLOCK,C BLOCK,O BLOCK AND Q BLOCK	Y	Y		B BLOCK UTILISED AS NOT ENOUGH SPACE IN A,C Q OR O.
27	18/07/2022	QUBE	PROGRESS ACE	144	EVE	105	N	B BLOCK,D BLOCK,F BLOCK,H BLOCK, K BLOCK, PSHED AND N BLOCK	Y	Y		VESSEL BERTHED AT 105 DUE TO 106 AND 107 BEING OCCUPIED.
28	19/07/2022	QUBE	BERGAMOT ACE	118	DAY	105	N	D BLOCK, C BLOCK,F BLOCK,H BLOCK,P SHED AND N BLOCK	Y	Y		C BLOCK UTILISED AS NOT ENOUGH SPACE IN B,D,F OR H.VESSEL BERTHED AT 105 DUE TO 106 AND 107 BEING OCCUPIED.
29	20/07/2022	QUBE	TASMAN CHIEF	2203W	DAY	105	Y	M BLOCK	Y	Y		BERTH DELAY DUE TO GENERAL CARGO ALSONDSIDE ALREADY. ORIGINAL ETA 17/07/22 - VESSEL BERTHED 20/07/22
30	21/07/2022	QUBE	GRAND MARK	001	NIGHT	107	N	EBLK, 107CON, A BLOCK, B BLOCK,C BLOCK,O BLOCK,Q BLOCK AND D BLOCK	Y	Y		B AND D BLOCK UTILISED AS NOT ENOUGH SPACE IN A,C Q OR O.
31	21/07/2022	LINX	GREEN BAY	109	EVE	107	N	107CON, EBLK,C BLOCK,O BLOCK AND ESHED	Y	Y		VESSEL DETAINED BY AMSA - STAYED ALONGISED FOR 24HRS AFTER OPERATIONS COMPLETED
32	23/07/2022	QUBE	SWAN ACE	115	NIGHT	107	Y	107CON AND C BLOCK	Y	Y		BERTH DELAY DUE TO GREEN BAY DETENTION
33	24/07/2022	LINX	SAGAR ODYSSEY	47SZ	DAY	106	N	P SHED AND G SHED	Y	Y		
34	25/07/2022	QUBE	FEDERAL INSPIRE	0722	DAY	103	N	DIRECT TO SHIP	Y	Y		
35	25/07/2022	QUBE	MIGNON	EE213	EVE	107	N	107CON, EBLK,C BLOCK,O BLOCK AND ESHED	Y	Y		
36	27/07/2022	QUBE	MORNING CORNET	EZ204	DAY	107	N	107CON, EBLK, I BLOCK,C BLOCK,Q BLOCKA AND E SHED	Y	Y		
37	27/07/2022	QUBE	GREEN BULKER	2056	DAY	105	N	L BLOCK AND PS HED	Y	Y		
38	28/07/2022	QUBE	BOSPOROUS HIGHWAY	126	NIGHT	107	N	107CON, EBLK,A B BLOCK,C BLOCK,O BLOCK,Q BLOCK AND ESHED	Y	Y		
39	28/07/2022	QUBE	TRANS FUTURE 6	139	DAY	106	N	F BLOCK,H BLOCK,L BLOCK,P SHED AND N BLOCK	Y	Y		
40	29/07/2022	QUBE	TOMBARRA	EF213	DAY	107	N	107CON, EBLK,GBLK, I BLOCK,A BLOCK,C BLOCK,O BLOC,, Q BLOCK,ESHED AND LINKSPAN	Y	Y		
41	29/07/2022	QUBE	ONYX ARROW	101	EVE	106	N	F BLOCK,H BLOCK,PSHED AND N BLOCK	Y	Y		
42	30/07/2022	QUBE	MORNING CLARA	2263	NIGHT	105	N	H BLOCK, PSHED AND N BLOCK	Y	Y		VESSEL BERTHED AT 105 DUE TO 106 AND 107 BEING OCCUPIED.
43	30/07/2022	QUBE	SARA	0722	NIGHT	103	N	DIRECT TO SHIP	Y	Y		VESSEL BERTHED AT 105 DUE TO 106 AND 107 BEING OCCUPIED.
44	30/07/2022	QUBE	GLAFKOS	2202	DAY	106	N	GSHED AND M BLOCK	Y	Y		
45	30/07/2022	QUBE	WALRUS ACE	031	EVE	107	N	C BLOCK AND Q BLOCK	Y	Y		
45	31/07/2022	LINX	ARTEMIS LEADER	109	DAY	105	N	B BLOCK, D BLOCK AND N BLOCK	Y	Y		VESSEL BERTHED AT 105 DUE TO 106 AND 107 BEING OCCUPIED.

TOTAL VESSELS FOR MONTH	LINX	QUBE
	12	33
GREEN BERTH	4	25
ORANGE BERTH	8	8

Legend - Berth # and Laydown
 Primary

Secondary
Tertiary

<i>RED BERTH</i>	0	0
<i>GREEN LAYDOWN</i>	9	28
<i>ORANGE LAYDOWN</i>	2	5
<i>RED LAYDOWN</i>	1	0
<i>NUMBER OF BERTHING DELAYS</i>	0	2
<i>NUMBER OF MACHINERY ISSUES/REQUESTS NOT MET</i>	0	0

NUMBER	DATE	STEVE-DORE	VESSEL	VOYAGE	STARTING SHIFT	BERTH #	BERTH DELAY	LAYDOWN	MACHINERY REQUEST RECEIVED	MACHINERY REQUEST FILLED	MACHINERY ISSUES	NOTES
1	1/08/2022	QUBE	PRESTIGE ACE	180	EVE	107	N	107CON, B BLOCK, C BLOCK, O BLOCK, Q BLOCK AND ESHED	Y	Y		B AND D BLOCK UTILISED AS NOT ENOUGH SPACE IN A, C Q OR O. VESSEL OPERATIONS DELAYED BY 8HRS DUE TO YARD CONGESTION.
2	1/08/2022	QUBE	REGINA ISLAND	22122	DAY	105	N	DIRECT TO TRUCK	Y	Y		
3	3/08/2022	LINX	HOEGH TRIDENT	197	EVE	107	N	107CON, EBLK, GBLK, I BLOCK, LINKSPAN, C BLOCK Q BLOCK AND E SHED	Y	Y		
4	4/11/2022	QUBE	GRAVITY HIGHWAY	060	NIGHT	105	N	F BLOCK, H BLOCK AND N BLOCK	Y	Y		VESSEL BERTHED AT 105 DUE TO 106 AND 107 BEING OCCUPIED.
5	5/08/2022	LINX	LEO LEADER	095	DAY	107	N	107CON, EBLK, A BLOCK, C BLOCK, O BLOCK, Q BLOCK AND ESHED	Y	Y		
6	6/08/2022	QUBE	NEW CENTURY	173	EVE	105	N	D BLOCK AND F BLOCK	Y	Y		D AND F BLOCK UTILISED AS NOT ENOUGH SPACE IN H. VESSEL BERTHED AT 105 DUE TO 106 AND 107 BEING OCCUPIED
7	6/08/2022	QUBE	MORNING CELESTA	EE215	EVE	106	N	F BLOCK, H BLOCK, P SHED AND N BLOCK	Y	Y		
8	6/08/2022	QUBE	THERMOPYLAE	EF214	DAY	107	N	107CON, GBLK, LINSKAN, C BLOCK, Q BLOCK AND ESHED	Y	Y		OPERATIONS DELAYED BY 8HRS DUE TO QUBE NOT HAVING ENOUGH LABOUR
9	7/08/2022	QUBE	KITE ARROW	0322	NIGHT	106	N	L BLOCK AND K BLOCK	Y	Y		
10	7/08/2022	QUBE	BELUGA ACE	037	EVE	105	N	B BLOCK, D BLOCK P SHED AND N BLOCK	Y	Y		VESSEL BERTHED AT 105 DUE TO 106 AND 107 BEING OCCUPIED. B AND D BLOCKS UTILISED AS NOT ENOUGH SPACE IN H OR F.
11	8/08/2022	QUBE	GLOVIS COUNTESS	024	EVE	107	Y	107CON, C BLOCK, O BLOCK, AND Q BLOCK	Y	Y		BERTHING DELAYED FROM 0400HRS 08/08 TO 1445HRS 08/08/22 DUE TO YARD CONGESTION
12	8/08/2022	QUBE	VIKING PASSAMA	2254	EVE	105	Y	B BLOCK, F BLOCK, H BLOCK AND N BLOCK	Y	Y		BERTHING DELAYED FROM 2250HRS 07/08 TO 1730HRS 08/08/22 DUE TO YARD CONGESTION. VESSEL BERTHED AT 105 DUE TO 106 AND 107 BEING OCCUPIED.
13	9/08/2022	QUBE	PALMELA	189	EVE	107	N	A BLOCK AND C BLOCK	Y	Y		
14	10/08/2022	QUBE	MORNING CRYSTAL	2265	EVE	107	N	107CON, EBLK, A BLOCK, B BLOCK, C BLOCK, O BLOCK, Q BLOCK, ESHED AND LINKSPAN	Y	Y		B BLOCK UTILISED AS NOT ENOUGH SPACE IN A, C Q OR O.
15	11/08/2022	QUBE	VIKING CORAL	041	EVE	105	N	F BLOCK, H BLOCK AND N BLOCK	Y	Y		
16	12/08/2022	QUBE	SALOME	AF242	NIGHT	107	N	107CON, EBLK, GBLK, C BLOCK AND LINKSPAN	Y	Y		
17	12/08/2022	QUBE	AAL SHANGHAI	22005	DAY	106	N	P SHED	Y	Y		
18	12/08/2022	QUBE	ATHENS HIGHWAY	121	EVE	105	N	B BLOCK, D BLOCK, F BLOCK, H BLOCK AND N BLOCK	Y	Y		VESSEL BERTHED AT 105 DUE TO 106 AND 107 BEING OCCUPIED.
19	13/08/2022	QUBE	EUPHONY ACE	132	DAY	107	N	107CON, A BLOCK, C BLOCK, O BLOCK AND LINKSPAN	Y	Y		
20	14/08/2022	LINX	HERCULES LEADER	088	NIGHT	105	Y	B BLOCK, C BLOC AND R BLOCK	Y	Y		VESSEL BERTHED AT 105 DUE TO 106 AND 107 BEING OCCUPIED. C BLOCK UTILISED AS NOT ENOUGH SPACE IN H, F, D OR B BLOCKS. BERTHING DELAYED FROM 1200HRS 13/08/22 TO 0400HRS 14/08/22 DUE TO YARD CONGESTION
21	14/08/2022	LINX	HOEGH BRASILIA	105	DAY	107	N	GBLK, A BLOCK, LINKSPAN AND I BLOCK	Y	Y		OPERATIONS DELAYED FROM D/S 14/08/22 TO D/S 15/08/22 DUE TO YARD CONGESTION
22	15/08/2022	QUBE	IGUAZU HIGHWAY	040	EVE	105	N	B BLOCK, C BLOCK, D BLOCK, F BLOCK, H BLOCK AND N BLOCK	Y	Y		VESSEL BERTHED AT 105 DUE TO 106 AND 107 BEING OCCUPIED. C BLOCK UTILISED AS NOT ENOUGH SPACE IN H, F, D OR B BLOCKS. DELAYED OPERATIONS FROM D/S 15/08 TO E/S 15/08/22 DUE TO YARD CONGESTION
23	15/08/2022	QUBE	HUAYANG DREAM	0822	DAY	103	N	DIRECT TO TRUCK	Y	Y		
24	15/08/2022	QUBE	TS GOLF	22055	DAY	106	N	L BLOCK AND P SHED	Y	Y		
25	17/08/2022	QUBE	TONGALA	EE217	NIGHT	105	Y	E SHED, H BLOCK AND N BLOCK	Y	Y		VESSEL BERTHED AT 105 DUE TO 106 AND 107 BEING OCCUPIED. BERTHING DELAYED DUE FROM 0000HRS 15/08 TO 2000HRS 16/08/22 DUE TO YARD CONGESTION.
26	18/08/2022	QUBE	AMETHYST ACE	104	EVE	105	N	D BLOCK, F BLOCK, H BLOCK AND N BLOCK	Y	Y		VESSEL BERTHED AT 105 DUE TO 106 AND 107 BEING OCCUPIED.
27	19/08/2022	QUBE	DA CHANG	52	NIGHT	106	N	H BLOCK, F BLOCK AND B BLOCK	Y	Y		
28	19/08/2022	QUBE	COSCO JINGGANGSHAN	52	EVE	105	N	N BLOCK	Y	Y		
29	20/08/2022	QUBE	POWAN	2206	DAY	103	N	DIRECT TO TRUCK	Y	Y		
30	20/08/2022	QUBE	GLOVIS CENTURY	001	EVE	107	N	107CON, EBLK, A BLOCK, O BLOCK, Q BLOCK AND LINKSPAN	Y	Y		
31	21/08/2022	QUBE	BESS	EE216	DAY	107	N	107CON, A BLOCK, C BLOCK, E SHED, I BLOCK AND LINKSPAN	Y	Y		
32	22/08/2022	QUBE	RUBY ACE	100	DAY	107	N	A BLOCK AND C BLOCK	Y	Y		

33	22/08/2022	LINX	ERIDANUS LEADER	053	EVE	105	N	B BLOCK,D BLOCK, F BLOCK, H BLOCK, PSHED AND N BLOCK	Y	Y	VESSEL BERTHED AT 105 DUE TO 106 AND 107 BEING OCCUPIED.
34	23/08/2022	QUBE	TRANS FUTURE 7	139	EVE	107	N	A BLOCK, C BLOCK, Q BLOCK, O BLOCK AND LINSpan	Y	Y	OPERATIONS DELAYED BY 8HRS DUE TO YARD CONGESTION
35	25/08/2022	QUBE	PROGRESS ACE	145	DAY	107	N	EBLK,A BLOCK,C BLOCK AND O BLOCK	Y	Y	
36	25/08/2022	QUBE	CHIPOL HAUNGHE	050	EVE	106	N	GSHED	Y	Y	
37	25/08/2022	QUBE	ELEKTRA	01	EVE	103	N	DIRECT TO TRUCK	Y	Y	
38	26/08/2022	QUBE	ASIAN VISION	2293	DAY	105	N	B BLOCK,D BLOCK,F BLOCK, PSHED AND N BLOCK	Y	Y	VESSEL BERTHED AT 105 DUE TO 106 AND 107 BEING OCCUPIED.
39	27/08/2022	QUBE	EASTERN HIGHWAY	139	DAY	107	N	I BLOCK,A BLOCK,C BLOCK,O BLOCK AND LINKSPAN	Y	Y	
40	28/08/2022	QUBE	PAGLIA	2266	EVE	105	N	D BLOCK,F BLOCK, H BLOCK, PSHED AND N BLOCK	Y	Y	VESSEL BERTHED AT 105 DUE TO 106 AND 107 BEING OCCUPIED. OPERATIONS DELAYED FROM E/S 28/08 TO E/S 29/08/22 DUE TO YARD CONGESTION
41	29/08/2022	QUBE	XIA MEN ZE PING	2202	DAY	107	N	107STRG	Y	Y	
42	29/08/2022	QUBE	QUEEN BUSAN	061	EVE	103	N	DIRECT TO TRUCK	Y	Y	
43	30/08/2022	QUBE	MORNING LYNN	EE218	EVE	106	N	B BLOCK,D BLOCK, E SHED,H BLOCK, I BLOCK,L BLOCK AND PSHED	Y	Y	

Legend - Berth # and Laydown

	Primary
	Secondary
	Tertiary

	LINX	QUBE
TOTAL VESSELS FOR MONTH	5	38
GREEN BERTH	3	27
ORANGE BERTH	2	11
RED BERTH	0	0
GREEN LAYDOWN	4	33
ORANGE LAYDOWN	1	5
RED LAYDOWN	0	0
NUMBER OF BERTHING DELAYS	1	3
NUMBER OF MACHINERY ISSUES/REQUESTS NOT MET	0	0

NUMBER	DATE	STEVE-DORE	VESSEL	VOYAGE	STARTING SHIFT	BERTH #	BERTH DELAY	LAYDOWN	MACHINERY REQUEST RECEIVED	MACHINERY REQUEST FILLED	MACHINERY ISSUES	NOTES
1	1/09/2022	QUBE	TASMAN CHIEF	2204W	EVE	106	N	GSLED AND L BLOCK	N	Y		
2	1/09/2022	LINX	HARVEST LEADER	064	EVE	105	N	D BLOCK, F BLOCK, H BLOCK, PSLED AND N BLOCK	Y	Y		VESSEL BERTHED AT 105 DUE TO 106 AND 107 BEING OCCUPIED.
3	2/09/2022	QUBE	TITANIA	EF215	DAY	107	N	107CON, I BLOCK, A BLOCK, C BLOCK, O BLOCK, Q BLOCK, AND ESHED	N	Y		OPERATIONS DELAYED BY 8HRS DUE TO SHIPPING LINE NOT WANTING LABOUR FOR NIGHT SHIFT
4	2/09/2022	QUBE	DOVER HIGHWAY	092	EVE	105	N	D BLOCK, F BLOCK, H BLOCK, PSLED AND N BLOCK	Y	Y		VESSEL BERTHED AT 105 DUE TO 106 AND 107 BEING OCCUPIED.
5	3/09/2022	LINX	ARTEMIS LEADER	110	EVE	105	N	A BLOCK, B BLOCK, D BLOCK AND N BLOCK	Y	Y		VESSEL BERTHED AT 105 DUE TO 106 AND 107 BEING OCCUPIED. A BLOCK UTILISED AS NOT ENOUGH SPACE IN B, D, F OR H BLOCKS
6	3/09/2022	QUBE	TALISMAN	EF216	EVE	107	N	O BLOCK, Q BLOCK AND ESHED	Y	Y		
7	6/09/2022	QUBE	ORCA ACE	034	EVE	107	N	EBLK, A BLOCK, C BLOCK, O BLOCK AND Q BLOCK	Y	Y		
8	6/09/2022	QUBE	LIBERTY ACE	140	EVE	105	N	B BLOCK, D BLOCK, H BLOCK, PSLED AND N BLOCK	Y	Y		VESSEL BERTHED AT 105 DUE TO 106 AND 107 BEING OCCUPIED.
9	7/09/2022	QUBE	PAGANELLA	2267	NIGHT	105	N	B BLOCK, C BLOCK, D BLOCK, F BLOCK, H BLOCK, M BLOCK, PSLED AND N BLOCK	Y	Y		VESSEL BERTHED AT 105 DUE TO 106 AND 107 BEING OCCUPIED. C BLOCK UTILISED AS NOT ENOUGH SPACE IN B, D, F OR H BLOCKS
10	8/09/2022	QUBE	MONTEVIDEO	22	DAY	103	N	DIRECT TO SHIP	Y	Y		
11	8/09/2022	QUBE	YU PENG	212	EVE	106	N	L BLOCK	Y	Y		
12	9/09/2022	QUBE	MORNING CHERRY	2268	EVE	107	N	107CON, A BLOCK, C BLOCK, O BLOCK AND ESHED	Y	Y		
13	10/09/2022	QUBE	MORNING CHANT	EE219	DAY	107	N	A BLOCK, C BLOCK, Q BLOCK, ESHED AND 107STRG	Y	Y		
14	10/09/2022	QUBE	POLARIS HIGHWAY	066	DAY	105	N	H BLOCK, USED2, PSLED AND N BLOCK	Y	Y		
15	11/09/2022	QUBE	BBC PLATA	9064	DAY	105	N	N BLOCK AND P SHED	Y	Y		
16	12/09/2022	QUBE	WISTERIA ACE	117	DAY	107	N	A BLOCK, C BLOCK AND Q BLOCK	Y	Y		
17	13/09/2022	LINX	NEPTUNE BARCELONA	001	DAY	105	N	F BLOCK, H BLOCK AND R BLOCK	Y	Y		VESSEL BERTHED AT 105 DUE TO 106 AND 107 BEING OCCUPIED.
18	14/09/2022	QUBE	BELUGA ACE	038	DAY	105	N	B BLOCK, D BLOCK, F BLOCK, H BLOCK AND N BLOCK	Y	Y		VESSEL BERTHED AT 105 DUE TO 106 AND 107 BEING OCCUPIED.
19	14/09/2022	QUBE	YANGTZE AMBITION	2206	DAY	106	N	L BLOCK	Y	Y		
20	15/09/2022	QUBE	THEBEN	217	DAY	107	N	Q BLOCK, 107CON, G SHED	Y	Y		
21	16/09/2022	LINX	HOEGH BERLIN	116	NIGHT	107	N	A BLOCK, C BLOCK, ESHED AND EBLK	Y	Y		
22	16/09/2022	QUBE	ATHENS HIGHWAY	122	EVE	105	N	B BLOCK, D BLOCK, F BLOCK, H BLOCK, PSLED AND N BLOCK	Y	Y		VESSEL BERTHED AT 105 DUE TO 106 AND 107 BEING OCCUPIED.
23	17/09/2022	LINX	HOEGH TOKYO	103	DAY	107	N	A BLOCK, C BLOCK AND 107CON	Y	Y		
24	17/09/2022	QUBE	MORNING PEACE	EF128	DAY	106	N	R BLOCK	Y	Y		
25	18/09/2022	QUBE	BBC RUBY	1170018	DAY	N	N	M BLOCK	Y	Y		
26	19/09/2022	QUBE	MORNING CRYSTAL	2269	EVE	107	N	A BLOCK, C BLOCK AND 107CON	Y	Y		
27	19/09/2022	QUBE	PRESTIGE ACE	181	EVE	107	N	O BLOCK, C BLOCK, GSHED AND 107CON	Y	Y		
28	19/09/2022	QUBE	TRANS FUTURE 5	143	EVE	105	N	B BLOCK, D BLOCK, F BLOCK, H BLOCK, PSLED AND N BLOCK	Y	Y		VESSEL BERTHED AT 105 DUE TO 106 AND 107 BEING OCCUPIED.
29	19/09/2022	QUBE	AFRICAN HERON	2564	EVE	103	N	DIRECT TO TRUCK	Y	Y		
30	21/09/2022	QUBE	BELUGA ACE	038	NIGHT	106	N	H BLOCK, USED2, PSLED AND N BLOCK	Y	Y		
31	22/09/2022	LINX	HERCULES LEADER	089	NIGHT	107	N	107CON, Q BLOCK, C BLOCK, A BLOCK, O BLOCK AND GSHED	Y	Y		
32	22/09/2022	QUBE	PAN BICON	0922	DAY	103	N	DIRECT TO SHIP	Y	Y		
33	23/09/2022	QUBE	AAL HONG KONG	22004	EVE	106	N	GSLED AND I BLOCK	Y	Y		
34	23/09/2022	LINX	ERIDANUS LEADER	054	EVE	107	N	C BLOCK, Q BLOCK, 107CON AND ESHED	Y	Y		
35	24/09/2022	QUBE	FIRMAMENT ACE	124	DAY	105	N	H BLOCK AND F BLOCK	Y	Y		
36	24/09/2022	QUBE	VIKING PASSAMA	2216	EVE	107	N	Q BLOCK, O BLOCK, GSEHD AND LINKSPAN	Y	Y		VESSEL BERTHED AT 105 DUE TO 106 AND 107 BEING OCCUPIED.
37	26/09/2022	QUBE	IGUAZU HIGHWAY	033	NIGHT	107	N	C BLOCK	Y	Y		
38	26/09/2022	LINX	GREEN COVE	079	DAY	107	N	A BLOCK, Q BLOCK, O BLOCK, ESHED AND 107CON	Y	Y		
39	26/09/2022	QUBE	SAGA FRONTIER	49SZ	DAY	106	N	DIRECT TO SHIP	Y	Y		
40	26/09/2022	LINX	CAPRICORNUS LEADER	052	DAY	105	N	H BLOCK, R BLOCK, PSLED AND N BLOCK	Y	Y		VESSEL BERTHED AT 105 DUE TO 106 AND 107 BEING OCCUPIED.
41	27/09/2022	QUBE	RCC ASIA	003	DAY	105	N	H BLOCK AND F BLOCK	Y	Y		
42	29/09/2022	QUBE	GRAND NAPOLI	0422	DAY	107	N	C BLOCK AND A BLOCK	Y	Y		
43	29/09/2022	QUBE	TRANS FUTURE 6	143	DAY	105	N	H BLOCK, D BLOCK, B BLOCK AND 105STRG	Y	Y		VESSEL BERTHED AT 105 DUE TO 106 AND 107 BEING OCCUPIED.
44	30/09/2022	QUBE	EMERALD ACE	080	DAY	105	N	H BLOCK AND N BLOCK	Y	Y		VESSEL BERTHED AT 105 DUE TO 106 AND 107 BEING OCCUPIED.
45	30/09/2022	QUBE	ARC COMMITMENT	EE220	DAY	107	N	C BLOCK AND E SHED	Y	Y		

Legend - Berth # and Laydown

	Primary
	Secondary
	Tertiary

	SUMMARY	LINX	QUBE	COMMENT
TOTAL VESSELS FOR MONTH		9	36	
GREEN BERTH		5	24	
ORANGE BERTH		4	12	
RED BERTH		0	0	
GREEN LAYDOWN		5	34	
ORANGE LAYDOWN		2	1	
RED LAYDOWN		2	1	
NUMBER OF BERTHING DELAYS		0	0	
NUMBER OF MACHINERY ISSUES/REQUESTS NOT MET		0	2	

NUMBER	DATE	STEVE-DORE	VESSEL	VOYAGE	STARTING SHIFT	BERTH #	BERTH DELAY	LAYDOWN	MACHINERY REQUEST RECEIVED	MACHINERY REQUEST FILLED	MACHINERY ISSUES	NOTES
1	1/10/2022	LINX	HOEGH TRADER	163	NIGHT	107	N	107CON,C BLOCK, Q BLOCK AND E SHED	Y	Y		
2	1/10/2022	QUBE	EMERALD ACE	080	EVE	105	N	EBLK, 107CON,A BLOCK, C BLOCK, Q BLOK, D BLOCK, B BLOCK AND ESHED	Y	Y		VESSEL BERTHED AT 105 DUE TO 106 AND 107 BEING OCCUPIED. A AND C BLOCK UTILISED AS NOT ENOUGH SPACE IN H AND F BLOCKS
3	2/10/2022	LINX	SAGA FRONTIER	49SZ	EVE	106	N	DIRECT TO HOOK	Y	Y		
4	2/10/2022	QUBE	ARC COMMITMENT	EE220	NIGHT	107	N	107CON, 107STRG, A BLOCK, C BLOCK, O BLOCK, Q BLOCK, ESHED AND G SHED	Y	Y		VESSEL OPERATIONS DELAYED BY 16HRS DUE TO CONGESTION
5	2/10/2022	QUBE	TASMAN CHIEF	2205W	DAY	105	N	N BLOCK AND PSHEd	Y	Y		
6	3/10/2022	QUBE	DARYA SITA	1GEX	EVE	103	N	DIRECT TO HOOK	Y	Y		
7	4/10/2022	QUBE	DOVER HIGHWAY	093	EVE	106	N	B BLOCK, D BLOCK, F BLOCK, H BLOCK, R BLOCK, C BLOCK, PSHEd AND N BLOCK	Y	Y		C BLOCK UTILISED AS NOT ENOUGH SPACE IN OTHER PADS
8	6/10/2022	LINX	NEPTUNE LEADER	117	DAY	107-105	N	B BLOCK, D BLOCK, F BLOCK AND H BLOCK	Y	Y		BERTHED AT 107 FOR FUMIGATION AND THEN MOVED TO 105 TO COMMENCE DISCHARGE. VESSEL ALONGSIDE FOR 12 DAYS DUE TO QUARATINE ISSUES
9	8/10/2022	QUBE	ANIARA	OE221	DAY	107	N	107CON, 107STRG, C BLOCK, Q BLOCK, E SHED AND G SHED	Y	Y		
10	8/10/2022	QUBE	ARDENNES	2202	EVE	106	N	L BLOCK	Y	Y		
11	8/10/2022	QUBE	CL XUCHANG	1022	EVE	103	N	DIRECT TO HOOK	Y	Y		
12	8/10/2022	LINX	ARTEMIS LEADER	111	NIGHT	107	N	107CON, A BLOCK AND O BLOCK	Y	Y		
13	11/10/2022	LINX	HOEGH TROOPER	197	NIGHT	107	N	107CON, C BLOCK, O BLOCK, Q BLOCK AND GSHED	Y	Y		
14	13/10/2022	QUBE	PAGLIA	2270	NIGHT	107	N	A BLOCK, C BLOCK, O BLOCK, Q BLOCK, E SHED AND I BLOCK	Y	Y		
15	14/10/2022	QUBE	TURANDOT	2271	DAY	107	N	107CON, A BLOCK, C BLOCK, O BLOCK AND ESHED	Y	Y		
16	14/10/2022	LINX	THEMIS LEADER	032	NIGHT	105	N	B BLOCK, D BLOCK, H BLOCK, PSHEd AND N BLOCK	Y	Y		VESSEL BERTHED AT 105 DUE TO 106 AND 107 BEING OCCUPIED.
17	14/10/2022	QUBE	VIGOR SW	002	DAY	106	N	L AND M BLOCKS	Y	Y		
18	15/10/2022	QUBE	SUNLIGHT ACE	105	EVE	107	N	C BLOCK	Y	Y		
19	15/10/2022	QUBE	PACIFIC PIONEER	1022	NIGHT	103	N	DIRECT TO HOOK	Y	Y		
20	15/10/2022	QUBE	CARNATION ACE	079	DAY	107	N	107CON, Q BLOCK, C BLOCK, A BLOCK AND E SHED	Y	Y		
21	16/10/2022	LINX	APHRODITE LEADER	031	DAY	105	N	B BLOCK, D BLOCK, F BLOCK, R BLOCK AND H BLOCK	Y	Y		VESSEL BERTHED AT 105 DUE TO 106 AND 107 BEING OCCUPIED.
22	16/10/2022	QUBE	DON JUAN	2217	DAY	107	N	EBLK,O BLOCK,Q BLOCK AND E SHED	Y	Y		VESSEL OPERATIONS DELAYED BY 30HRS DUE TO CONGESTION
23	17/10/2022	QUBE	AMBER ARROW	138	EVE	106	N	C BLOCK,D BLOCK,F BLOCK,H BLOCK, I BLOCK, P SHED AND L BLOCK	Y	Y		VESSEL OPERATIONS DELAYED BY 24HRS DUE TO CONGESTION
24	17/10/2022	QUBE	MORNING CELINE	EE223	NIGHT	105	N	B BLOCK,DOFL,M BLOCK, P SHED AND N BLOCK	Y	Y		VESSEL OPERATIONS DELAYED BY 16HRS DUE TO CONGESTION. VESSEL BERTHED AT 105 DUE TO 106 AND 107 BEING OCCUPIED.
25	19/10/2022	QUBE	TRANS FUTURE 7	140	DAY	107	N	EBLK,A BLOCK,C BLOCK,O BLOCK, Q BLOCK AND ESHED	Y	Y		
26	20/10/2022	QUBE	AAL FREMANTLE	22007	NIGHT	106	N	L BLOCK	Y	Y		
27	20/10/2022	QUBE	TIRRANNA	EF219	EVE	105	N	D BLOCK,F BLOCK, H BLOCK, P SHED AND N BLOCK	Y	Y		VESSEL BERTHED AT 105 DUE TO 106 AND 107 BEING OCCUPIED.
28	22/10/2022	QUBE	ORCA ACE	035	DAY	105	N	D BLOCK,F BLOCK,H BLOCK, PSHEd AND N BLOCK	Y	Y		VESSEL BERTHED AT 105 DUE TO 106 AND 107 BEING OCCUPIED.
29	23/10/2022	QUBE	DIGNITY ACE	071	DAY	105	N	B BLOCK, D BLOCK,H BLOCK, C BLOCK, H BLOCK, M BLOCK AND P SHED	Y	Y		VESSEL BERTHED AT 105 DUE TO 106 AND 107 BEING OCCUPIED. VESSEL ALONGSIDE FOR 10 DAYS DUE TO QUARANTINE ISSUES
30	23/10/2022	QUBE	MORNING CHERRY	2272	EVE	107	N	107CON,A BLOCK,C BLOCK,O BLOCK AND Q BLOCK	Y	Y		
31	24/10/2022	QUBE	PAGANELLA	2218	DAY	106	N	F BLOCK,H BLOCK,M BLOCK, P SHED AND N BLOCK	Y	Y		
32	24/10/2022	QUBE	THEMIS	NZ205	EVE	107	N	107CON, EBLK,C BLOCK,O BLOCK,Q BLOCK AND ESHED	Y	Y		
33	25/10/2022	QUBE	EUPHRATES HIGHWAY	093	EVE	106	N	D BLOCK,H BLOCK,P SHED AND N BLOCK	Y	Y		
34	26/10/2022	QUBE	HAPPY DIAMOND	2206	DAY	106	N	I BLOCK	Y	Y		
35	26/10/2022	QUBE	LEO SPIRIT	057	DAY	107	N	A BLOCK,B BLOCK,C BLOCK AND O BLOCK	Y	Y		
36	27/10/2022	QUBE	MARTORELL	154	EVE	107	N	107CON,C BLOCK AND Q BLOCK	Y	Y		
37	27/10/2022	QUBE	PEGASUS	1022	EVE	103	N	DIRECT TO HOOK	Y	Y		
38	27/10/2022	QUBE	MORNING CRYSTAL	2273	EVE	107	N	EBLK, 107CON,A BLOCK,C BLOCK,O BLOCK, Q BLOCK AND ESHED	Y	Y		
39	27/10/2022	QUBE	TAI XING	2201	DAY	106	N	WEST & EAST SIDE OF RAIL + TQ1	Y	Y		
40	29/10/2022	LINX	HERCULES LEADER	090	DAY	107	N	A BLOCK, B BLOCK,C BLOCK, O BLOCK AND Q BLOCK	Y	Y		
41	30/10/2022	QUBE	GLOVIS COMPANION	004	DAY	107	N	107CON, A BLOCK,B BLOCK,C BLOCK,D BLOCK, Q BLOCK, F BLOCK AND H BLOCK	Y	Y		

Legend - Berth # and Laydown

	Primary
	Secondary
	Tertiary

SUMMARY	LINX	QUBE
TOTAL VESSELS FOR MONTH	8	33
GREEN BERTH	4	28
ORANGE BERTH	4	5
RED BERTH	0	0
GREEN LAYDOWN	8	30
ORANGE LAYDOWN	0	2
RED LAYDOWN	0	1
NUMBER OF BERTHING DELAYS	0	0
NUMBER OF MACHINERY ISSUES/REQUESTS NOT MET	0	0

NUMBER	DATE	STEVE-DORE	VESSEL	VOYAGE	STARTING SHIFT	BERTH #	BERTH DELAY	LAYDOWN	MACHINERY REQUEST RECEIVED	MACHINERY REQUEST FILLED	MACHINERY ISSUES	NOTES
1	1/11/2022	QUBE	DA DE	55	DAY	106	Y	B BLOCK, F BLOCK AND H BLOCK	Y	Y		
2	1/11/2022	QUBE	TREASURE	NZ206	DAY	107	Y	107CON, A BLOCK,B BLOCK,C BLOCK,D BLOCK, O BLOCK AND ESHED	Y	Y		B AND D UTILISED AS NOT ENOUGH SPACE IN A AND C
3	2/11/2022	QUBE	WORLD ROYAL	55	DAY	103	N	DIRECT TO TRUCK	Y	Y		
4	3/11/2022	QUBE	NEW CENTURY 1	175	NIGHT	107	Y	A BLOCK,C BLOCK, O BLOCK AND Q BLOCK	Y	Y		
5	3/11/2022	LINX	HOEGH LONDON	102	NIGHT	107		107CON, EBLK, GBLK, I BLOCK, ESHED, A BLOCK,C BLOCK AND O BLOCK	Y	Y		
6	4/11/2022	LINX	ERIDANUS LEADER	055	DAY	105	Y	B BLOCK AND D BLOCK	Y	Y		B AND D UTILISED AS NOT ENOUGH SPACE IN H AND F
7	4/11/2022	QUBE	BERGE HAKODATE	23022	DAY	103	Y	DIRECT TO TRUCK	Y	Y		
8	5/11/2022	QUBE	ATHENS HIGHWAY	123	DAY	107	Y	EBLK,A BLOCK,C BLOCK,O BLOCK, Q BLOCK AND ESHED	Y	Y		
9	5/11/2022	LINX	CAPRICORNUS LEADER	053	DAY	105	Y	B BLOCK,D BLOCK,F BLOCK,H BLOCK, R BLOCK,, N BLOCK	Y	Y		VESSEL HAS QUARANTINE ISSUES AND WAS ALONGSIDE FOR 11 DAYS
10	5/11/2022	QUBE	SIARD	4062	NIGHT	103	Y	DIRECT TO TRUCK	Y	Y		
11	6/11/2022	QUBE	ELIZABETH OLDENDORFF	2201	DAY	107	Y	GBLK	Y	Y		
12	7/11/2022	QUBE	ADRIATIC HIGHWAY	132	EVE	107	Y	107CON, EBLK,A BLOCK,C BLOCK,O BLOCK, E SHED AND LINKSPAN	Y	Y		
13	8/11/2022	QUBE	BELUGA ACE	039	DAY	107	Y	EBLK, 107CON,A BLOCK,B BLOCK, C BLOCK, O BLOCK, Q BLOCK AND ESHED	Y	Y		B BLOCK UTILISED AS NOT ENOUGH SPACE IN A AND C
14	8/11/2022	QUBE	JING WANG LING	59	EVE	103	N	103 STRINGER	Y	Y		
15	9/11/2022	QUBE	NABUCCO	EF220	DAY	107	Y	107CON, EBLK, I BLOCK,O BLOCK,Q BLOCK AND ESHED	Y	Y		
16	9/11/2022	QUBE	FENG TIAN	2206	DAY	106	Y	L BOCK AND P SHED	Y	Y		
17	10/11/2022	QUBE	VIKING PASSAMA	2219	DAY	107	Y	EBLK,107STRG,C BLOCK,Q BLOCK AND ESHED	Y	Y		
18	11/11/2022	QUBE	CLOVER ACE	098	DAY	107	N	EBLK,A BLOCK,C BLOCK AND ESHED	Y	Y		
19	12/11/2022	QUBE	TUGELA	EF222	DAY	107	Y	EBLK, 107CON,I BLOCK,C BLOCK,O BLOCK, Q BLOCK AND ESHED	Y	Y		
20	12/11/2022	QUBE	TASMAN CHIEF	2206W	DAY	106	Y	M BLOCK AND P SHED	Y	Y		
21	13/11/2022	LINX	EQUULEUS LEADER	034	DAY	107	Y	EBLK,107CON, 107STRG, A BLOCK,, O BLOCK AND ESHED	Y	Y		
22	14/11/2022	QUBE	ONYX ARROW	103	DAY	107	Y	A BLOCK, B BLOCK,O BLOCK AND Q BLOCK	Y	Y		
23	15/11/2022	LINX	HOEGH SEOUL	124	DAY	107	Y	A BLOCK,C BLOCK,D BLOCK,Q BLOCK, O BLOCK AND LINKSPAN	Y	Y		D BLOCK UTILISED AS ALL PCC VESSELS BERTHING AT 107 DUE TO 106 AND 105 BEING OCCUPIED - THEREFORE SPACE IN A,C,O,Q BEING USED EVERY VESSEL AND NEED TON OVERFLOW TO D
24	15/11/2022	QUBE	TS BRAVO	2201	DAY	106	Y	ESHED AND M BLOCK	Y	Y		ESHED UTILISED AS G SHED WAS FULL FROM PREVIOUS VESSELS
25	17/11/2022	QUBE	TRANS FUTURE 5	144	NIGHT	107	Y	107CON,A BLOCK,B BLOCK,D BLOCK AND ESHED	Y	Y		D AND B BLOCK UTILISED AS ALL PCC VESSELS BERTHING AT 107 DUE TO 106 AND 105 BEING OCCUPIED - THEREFORE SPACE IN A,C,O,Q BEING USED EVERY VESSEL AND NEED TON OVERFLOW TO D AND B
26	17/11/2022	QUBE	RCCSHANGHAI	009	EVE	107	Y	C BLOCK, AND O BLOCK	Y	Y		
27	18/11/2022	QUBE	TRAVIATA	EE222	DAY	107	Y	EBLK,GBLK, 107CON,C BLOCK,Q BLOCK,O BLOCK,ESHED AND LIKNSPAN	Y	Y		
28	18/11/2022	QUBE	FEDERAL IBUKI	1	EVE	103	N	DIRECT TO TRUCK	Y	Y		
29	20/11/2022	LINX	ARTEMIS LEADER	113	DAY	107	Y	107CON,A BLOCK,, O BLOCK, ESHED AND LOT13	Y	Y		
30	21/11/2022	QUBE	DON JUAN	2274	DAY	107	Y	107CON, I BLOCK,A BLOCK,B BLOCK,C BLOCK, Q BLOCK AND ESHED	Y	Y		B BLOCK UTILISED AS ALL PCC VESSELS BERTHING AT 107 DUE TO 106 AND 105 BEING OCCUPIED - THEREFORE SPACE IN A,C,O,Q BEING USED EVERY VESSEL AND NEED TON OVERFLOW TO B
31	22/11/2022	QUBE	RCC TIANJIN	008	DAY	107	Y	A BLOCK,C BLOCK AND O BLOCK	Y	Y		
32	22/11/2022	QUBE	BANDURA	2207	EVE	106	Y	L BLOCK AND P SHED	Y	Y		
33	23/11/2022	QUBE	DIVINE ACE	081	NIGHT	107	Y	107CON,EBLK,GBLK,A BLOCK,B BLOCK,C BLOCK,O BLOCK, Q BLOCK AND ESHED	Y	Y		B BLOCK UTILISED AS ALL PCC VESSELS BERTHING AT 107 DUE TO 106 AND 105 BEING OCCUPIED - THEREFORE SPACE IN A,C,O,Q BEING USED EVERY VESSEL AND NEED TON OVERFLOW TO B. QUARANTINE ISSUES WAS ALONGSIDE FOR 2.5 DAYS

34	25/11/2022	LINX	DORADO LEADER	115	DAY	105	Y	B BLOCK,C BLOCK,D BLOCK, F BLOCK,H BLOCK, PSBED AND N BLOCK	Y	Y	VESSEL BERTHED AT 105 DUE TO 106 AND 107 BEING OCCUPIED. C BLOCK UTILISED AS NOT ENOUGH SPACE IN H AND F BLOCKS
35	26/11/2022	QUBE	SEVEN SEAS HIGHWAY	137	DAY	107	Y	A BLOCK,C BLOCK,Q BLOCK AND ESHED	Y	Y	QUARNTINE ISUES WAS ALONGSIDE FOR 2.5 DAYS
36	26/11/2022	QUBE	COREWISE OL		DAY	106	Y	GSHED	Y	Y	
37	26/11/2022	LINX	GRAND LEGACY	094	DAY	105	Y	B BLOCK,D BLOCK,F BLOCK,H BLOCK, M BLOCK AND N BLOCK	Y	Y	QUARNTINE ISUES WAS ALONGSIDE FOR 2 DAYS
38	26/11/2022	QUBE	BBC HYHAVN	6038	DAY	103	Y	103 STRINGER	Y	Y	
39	27/11/2022	QUBE	PETANI	1122	NIGHT	103	Y	DIRECT TO TRUCK	Y	Y	
40	29/11/2022	QUBE	TRANS FUTURE 6	141	DAY	107	Y	107CON,C BLOCK,O BLOCK, Q BLOCK AND ESHED	Y	Y	OPERATIONS DELAYED BY 16HRS DUE TO YARD CONGESTION
41	29/11/2022	QUBE	MUNTGRACHT	2208A	EVE	106	Y	L BLOCK AND P SHED	Y	Y	
42	30/11/2022	LINX	NEW YORK	136	NIGHT	107	Y	107CON, 107STRG, A BLOCK,O BLOCK, Q BLOCK, ESHED AND LINKSPAN	Y	Y	

Legend - Berth # and Laydown

	Primary
	Secondary
	Tertiary

TOTAL VESSELS FOR MONTH	9	33
GREEN BERTH	5	33
ORANGE BERTH	4	0
RED BERTH	0	0
GREEN LAYDOWN	7	27
ORANGE LAYDOWN	2	6
RED LAYDOWN	0	0
NUMBER OF BERTHING DELAYS	9	30

NUMBER	DATE	STEVE-DORE	VESSEL	VOYAGE	STARTING SHIFT	BERTH #	BERTH DELAY	LAYDOWN	MACHINERY REQUEST RECEIVED	MACHINERY REQUEST FILLED	MACHINERY ISSUES	NOTES
1	1/12/2022	QUBE	CARNATION ACE	080	NIGHT	105	Y	B BLOCK,C BLOCK,D BLOCK, PSHED AN N BLOCK	Y	Y		VESSEL BERTHED AT 105 DUE TO 106 AND 107 BEING OCCUPIED. C BLOCK UTILISED AS NOT ENOUGH SPACE IN H AND F BLOCKS
2	2/12/2022	QUBE	ORCA ACE	036	DAY	105	Y	F BLOCK,H BLOCK,R BLOCK, P SHED AND N BLOCK	Y	Y		VESSEL BERTHED AT 105 DUE TO 106 AND 107 BEING OCCUPIED. VESSEL HAD QUARANTINE ISSUES AND WAS ALONGSIDE FOR 5 DAYS
3	2/12/2022	QUBE	BOHEME	EZ205	NIGHT	107	Y	107CON, I BLOCK,A BLOCK,C BLOCK,O BLOCK,Q BLOCK, AND ESHED	Y	Y		
4	2/12/2022	QUBE	POWAN	2209	DAY	106	N	L BLOCK	Y	Y		
5	2/12/2022	QUBE	AMBER ARROW	139	EVE	107	Y	107CON,A BLOCK,C BLOCK,D BLOCKAND E SHED	Y	Y		D BLOCK UTILISED AS ALL PCC VESSELS BERTHING AT 107 DUE TO 106 AND 105 BEING OCCUPIED - THEREFORE SPACE IN A,C,O,Q BEING USED EVERY VESSEL AND NEED TON OVERFLOW TO D
6	5/12/2022	QUBE	MIRACULOUS ACE	117	NIGHT	107	Y	107STRG,A BLOCK,B BLOCK,O BLOCK AND Q BLOCK	Y	Y		B BLOCK UTILISED AS ALL PCC VESSELS BERTHING AT 107 DUE TO 106 AND 105 BEING OCCUPIED - THEREFORE SPACE IN A,C,O,Q BEING USED EVERY VESSEL AND NEED TON OVERFLOW TO B
7	6/12/2022	QUBE	TONSBERG	EE224	NIGHT	107	Y	107CON. EBLK, GBLK, I BLOCK,D BLOCK,O BLOCK,Q BLOCK AND ESHED	Y	Y		D BLOCK UTILISED AS ALL PCC VESSELS BERTHING AT 107 DUE TO 106 AND 105 BEING OCCUPIED - THEREFORE SPACE IN A,C,O,Q BEING USED EVERY VESSEL AND NEED TON OVERFLOW TO D
8	6/12/2022	LINX	FENGTIEN	880	DAY	106	Y	LOAD ONLY	Y	Y		
9	7/12/2022	QUBE	HEEMSKERKGRACHT	2207	DAY	103	N	DIRECT TO TRUCK	Y	Y		
10	7/12/2022	QUBE	MORNING CRYSTAL	2276	EVE	107	Y	107CON, EBLK, GBLK,A BLOCK,B BLOCK,C BLOCK,D BLOCK, Q BLOCK AND ESHED	Y	Y		D AND B BLOCK UTILISED AS ALL PCC VESSELS BERTHING AT 107 DUE TO 106 AND 105 BEING OCCUPIED - THEREFORE SPACE IN A,C,O,Q BEING USED EVERY VESSEL AND NEED TON OVERFLOW TO D AND B
11	8/12/2022	QUBE	MARIA	11012	EVE	103	Y	DIRECT TO SHIP	Y	Y		
12	9/12/2022	LINX	HERCULES LEADER	091	DAY	105	Y	B BLOCK,D BLOCK,F BLOCK,H BLOCK, R BLOCK AND N BLOCK	Y	Y		VESSEL BERTHED AT 105 DUE TO 106 AND 107 BEING OCCUPIED.
13	9/12/2022	QUBE	MORNING CHERRY	2275	DAY	107	Y	107CON, EBLK,GBLK,I BLOCK, A BLOCK,C BLOCK, Q BLOCK AND ESHED	Y	Y		
14	10/12/2022	LINX	GOLIATH LEADER	105	EVE	105	Y	A BLOCK, B BLOCK,C BLOCK,D BLOCK,H BLOCK,L BLOCK,P SHED AND N BLOCK	Y	Y		VESSEL BERTHED AT 105 DUE TO 106 AND 107 BEING OCCUPIED. A AND C BLOCK UTILISED AS NOT ENOUGH SPACE IN H AND F BLOCKS
15	11/12/2022	QUBE	BLURE RIDGE HIGHWAY	118	DAY	107	Y	EBLK,A BLOCK,Q BLOCK,O BLOCK AND ESHED	Y	Y		
16	12/12/2022	QUBE	JASPER ARROW	122	EVE	107	Y	A BLOCK,C BLOCK AND Q BLOCK	Y	Y		VESSEL OPERATIONS DELAYED BY 16HRS DUE TO YARD CONGESTION
17	12/12/2022	LINX	ERIDANUS LEADER	056	DAY	105	Y	B BLOCK,C BLOCK,D BLOCK,F BLOCK,H BLOCK AND N BLOCK	Y	Y		VESSEL BERTHED AT 105 DUE TO 106 AND 107 BEING OCCUPIED. C BLOCK UTILISED AS NOT ENOUGH SPACE IN H AND F BLOCKS. VESSEL OPERATIONS DELAYED BY 32HRS DUE TO YARD CONGESTION
18	13/12/2022	LINX	HOEGH TRAVELLER	36	DAY	107	Y	EBLK, GBLK,ESHED, I BLOCK, A BLOCK AND C BLOCK	Y	Y		VESSEL OPERATIONS DEALYED BY 24HRS DUE TO YARD CONGESTION
19	13/12/2022	LINX	ULTRA FITZ ROY	01	EVE	106	Y	106STRG, PSHED AND N BLOCK	Y	Y		
20	14/12/2022	QUBE	GLOVIS COUNTESS	027	EVE	105	Y	H BLOCK,USED2, PSHED AND N BLOCK	Y	Y		VESSEL BERTHED AT 105 DUE TO 106 AND 107 BEING OCCUPIED.
21	15/12/2022	QUBE	TRANS FUTURE 7	141	NIGHT	105	Y	B BLOCK,D BLOCK,F BLOCK,H BLOCK,PSHED AND N BLOCK	Y	Y		VESSEL BERTHED AT 105 DUE TO 106 AND 107 BEING OCCUPIED.
22	16/12/2022	QUBE	TASMAN CHIEF	2207W	NIGHT	106	Y	GSHED, M BLOCK AND PSHED	Y	Y		
23	16/12/2022	QUBE	CHIPOL DONGHAI	042	EVE	103	N	DIRECT TO TRUCK	Y	Y		
24	16/12/2022	QUBE	PAGANELLA	2222	EVE	105	Y	D BLOCK,F BLOCK,H BLOCK, R BLOCK, PSHED AND N BLOCK	Y	Y		
24	17/12/2022	QUBE	TIJUCA	220107	EVE	107	Y	EBLK,107CON, I BLOCK,C BLOCK,O BLOCK,ESHED AND LINKSPAN	Y	Y		
26	18/12/2022	QUBE	GRAND PACE	001	DAY	107	Y	107CON, A BLOCK,B BLOCK,C BLOCK, D BLOCK AND GSHED	Y	Y		B AND D BLOCKS UTILISED AS NOT ENOUGH SPACE IN A,C,O AND Q BLOCKS
27	18/12/2022	QUBE	LYRIC HARMONY	035	DAY	103	N	DIRECT TO TRUCK	Y	Y		
28	18/12/2022	QUBE	DOVER HIGHWAY	093	DAY	105	Y	B BLOCK,D BLOCK,F BLOCK,H BLOCK,R BLOCK, PSHED AND N BLOCK	Y	Y		OPERATIONS DELAYED BY 16 HRS DUE TO YARD CONGESTION
29	19/12/2022	QUBE	BELUGA ACE	040	EVE	106	Y	A BLOCK,O BLOCK,L BLOCK AND PSHED	Y	Y		OPERATIONS DELAYED BY 30 HRS DUE TO YARD CONGESTION. A BLOCK UTILISED AS NO SPACE IN H,F,D AND B BLOCKS
30	19/12/2022	QUBE	TYSLA	EF224	EVE	107	Y	EBLK,GBLK, 107CON,Q BLOCK,ESHED,GSHED AND LINKSPAN	Y	Y		OPERATIONS DELAYED BY 24 HRS DUE TO YARD CONGESTION
21	21/12/2022	LINX	ATLAS LEADER	094	EVE	105	Y	B BLOCK, C BLOCK,F BLOCK,R BLOCK, PSHED AN NBLOCK	Y	Y		
32	21/12/2022	QUBE	TORRENS	EE227	EVE	107	Y	EBLK, GBLK, 107CON,107STRG,A BLOCK,C BLOCK,Q BLOCK, O BLOCK AND GSHED	Y	Y		OPERATIONS DELAYED BY 24 HRS DUE TO YARD CONGESTION
33	22/12/2022	QUBE	VIKING DESTINY	001	EVE	106	Y	C BLOCK,BLOCK,H BLOCK AND L BLOCK	Y	Y		OPERATIONS DELAYED BY 24 HRS DUE TO YARD CONGESTION. C AND Q BLOCKS UTILISED AS NOT ENOUGH SPACE IN H,F,D AND B BLOCKS
34	22/12/2022	QUBE	LYDDEN	016	EVE	105	Y	B BLOCK,D BLOCK, F BLOCK, H BLOCK,PSHED AND N BLOCK	Y	Y		
35	24/12/2022	LINX	WEAVER ARROW	07	NIGHT	107	Y	DIRECT TO SHIP	Y	Y		
36	26/12/2022	LINX	MSC IMMACOLAYA	0622	DAY	106	Y	GBLK,C BLOCK, I BLOCK, L BLOCK,M BLOCK,B BLOCK,D BLOCK,F BLOCK,H BLOCK,A BLOCK,Q BLOCK	Y	Y		OPERATIONS DELAYED BY 24 HRS DUE TO YARD CONGESTION. ALL AREAS UTILISED DUE TO YARD CONGESTION AND VESSEL HAVING A 3000 UNIT DISCHARGE
37	26/12/2022	QUBE	VIKING PASSAMA	2277	EVE	105	Y	B BLOCK,C BLOCK,F BLOCK,H BLOCK,PSHED AND N BLOCK	Y	Y		VESSEL BERTHED AT 105 DUE TO 106 AND 107 BEING OCCUPIED. C BLOCK UTILISED AS NOT ENOUGH SPACE IN H AND F BLOCKS. VESSEL OPERATIONS DELAYED BY 48HRS DUE TO YARD CONGESTION.
38	27/12/2022	QUBE	STAR EMILY		DAY	103	N	DIRECT TO SHIP	Y	Y		

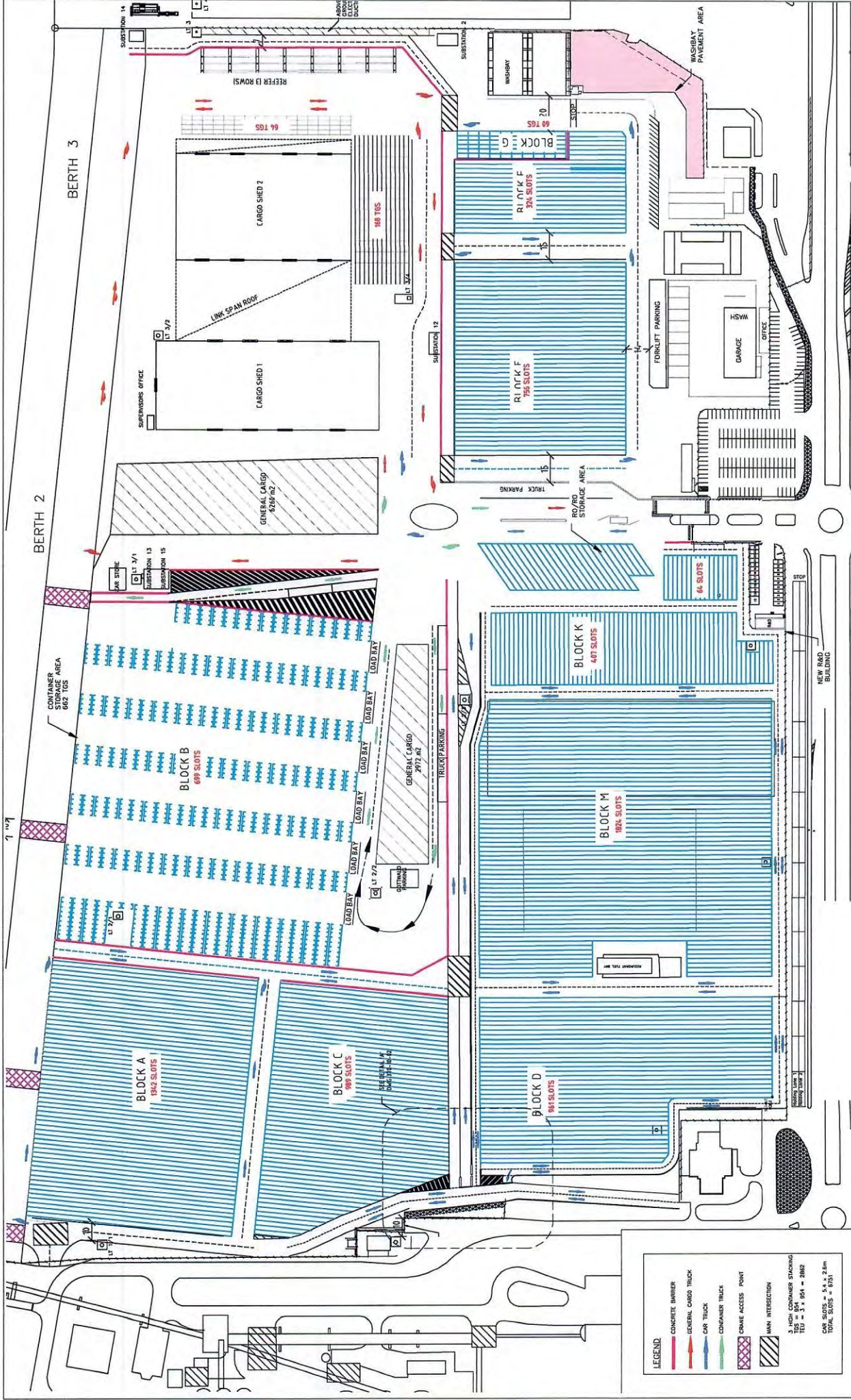
39	28/12/2022	QUBE	GRAND MARK	002	DAY	107	Y	A BLOCK,C BLOCK, Q BLOCK AND O BLOCK	Y	Y		OPERATIONS DELAYED BY 40 HRS DUE TO YARD CONGESTION
40	29/12/2022	QUBE	ADRIATIC HIGHWAY	133	EVE	105	Y	B BLOCK,D BLOCK,F BLOCK,H BLOCK AND N BLOCK	Y	Y		OPERATIONS DELAYED BY 32 HRS DUE TO YARD CONGESTION
41	31/12/2022	QUBE	BERGAMOT ACE	122	NIGHT	107	Y	107CON,107STR,C BLOCK,Q BLOCK, AND ESHED	Y	Y		

Legend - Berth # and Laydown

	Primary
	Secondary
	Tertiary

	SUMMARY	LINX	QUBE	COMMENT
	TOTAL VESSELS FOR MONTH	9	32	
	GREEN BERTH	5	23	
	ORANGE BERTH	4	9	
	RED BERTH	0	0	
	GREEN LAYDOWN	5	24	
	ORANGE LAYDOWN	2	6	
	RED LAYDOWN	2	2	
	NUMBER OF BERTHING DELAYS	4	20	
	NUMBER OF MACHINERY ISSUES/REQUESTS NOT MET	9	27	

PART B – TERMINAL LAYOUT FISHERMAN ISLANDS AND PORT KEMBLA



Project
 AAT FISHERMAN ISLANDS TERMINAL
 TERMINAL LAYOUT

Drawing Title
 C1 - LINEMARKING WORKS
 GENERAL ARRANGEMENT

Client:
 AAT
 Australian Amalgamated Terminals

James Rose Consulting
 ABRN 64 175 064 511
 Unit F21, 1-15 Barr Street
 Brisbane QLD 4001
 PH: 07 3555 8585
 FAX: 07 3555 8589
 msk@jamesrose.com.au
 www.jamesrose.com.au

Scale
 A3
 1:2000

Date
 04/05/19
 20/05/19

Prepared By
 PL

Verified By
 DN

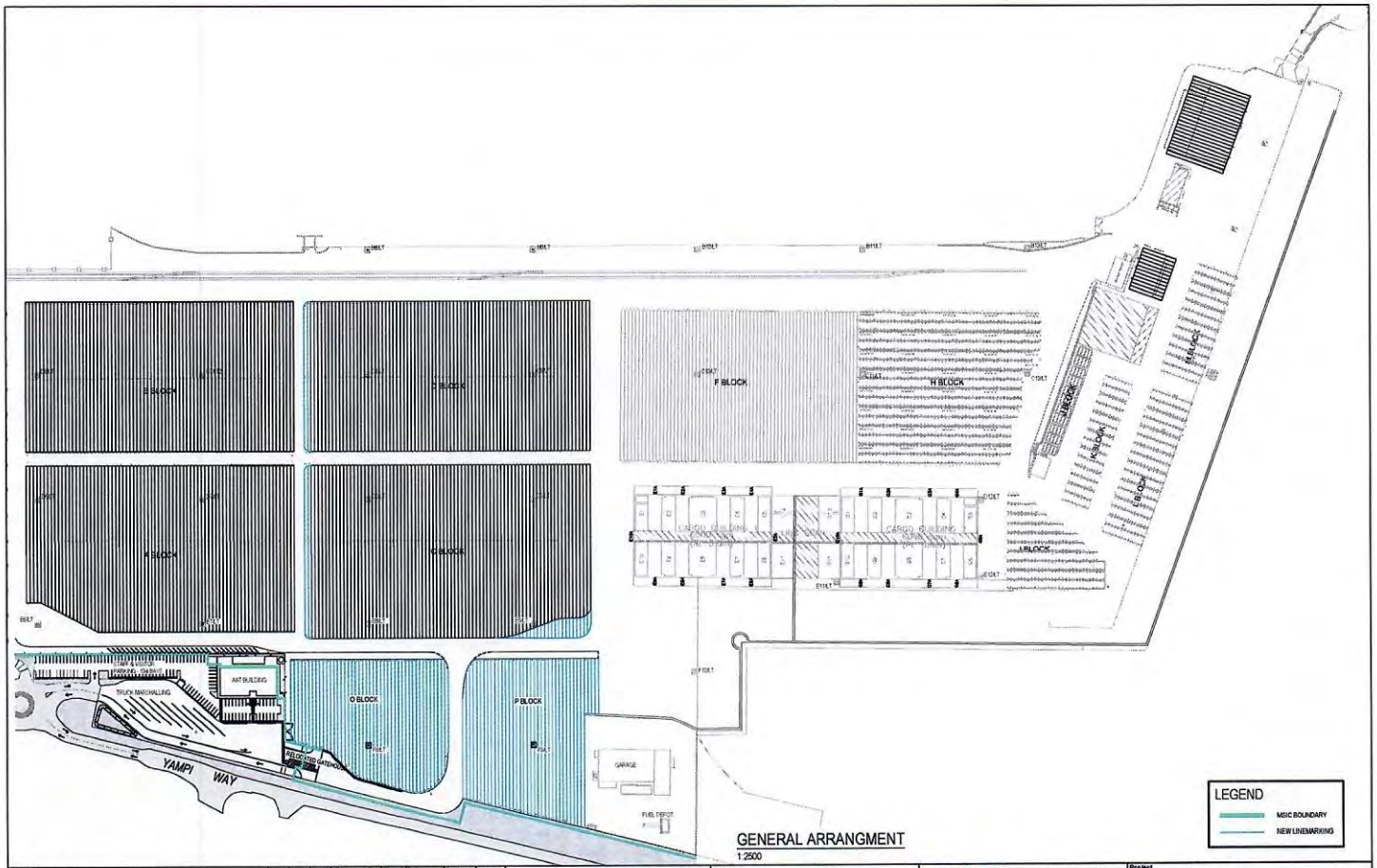
Approved By
 DN

Horizontal Datum
 Vertical Datum

Revised By
 Ver. App.

Project No.
 270

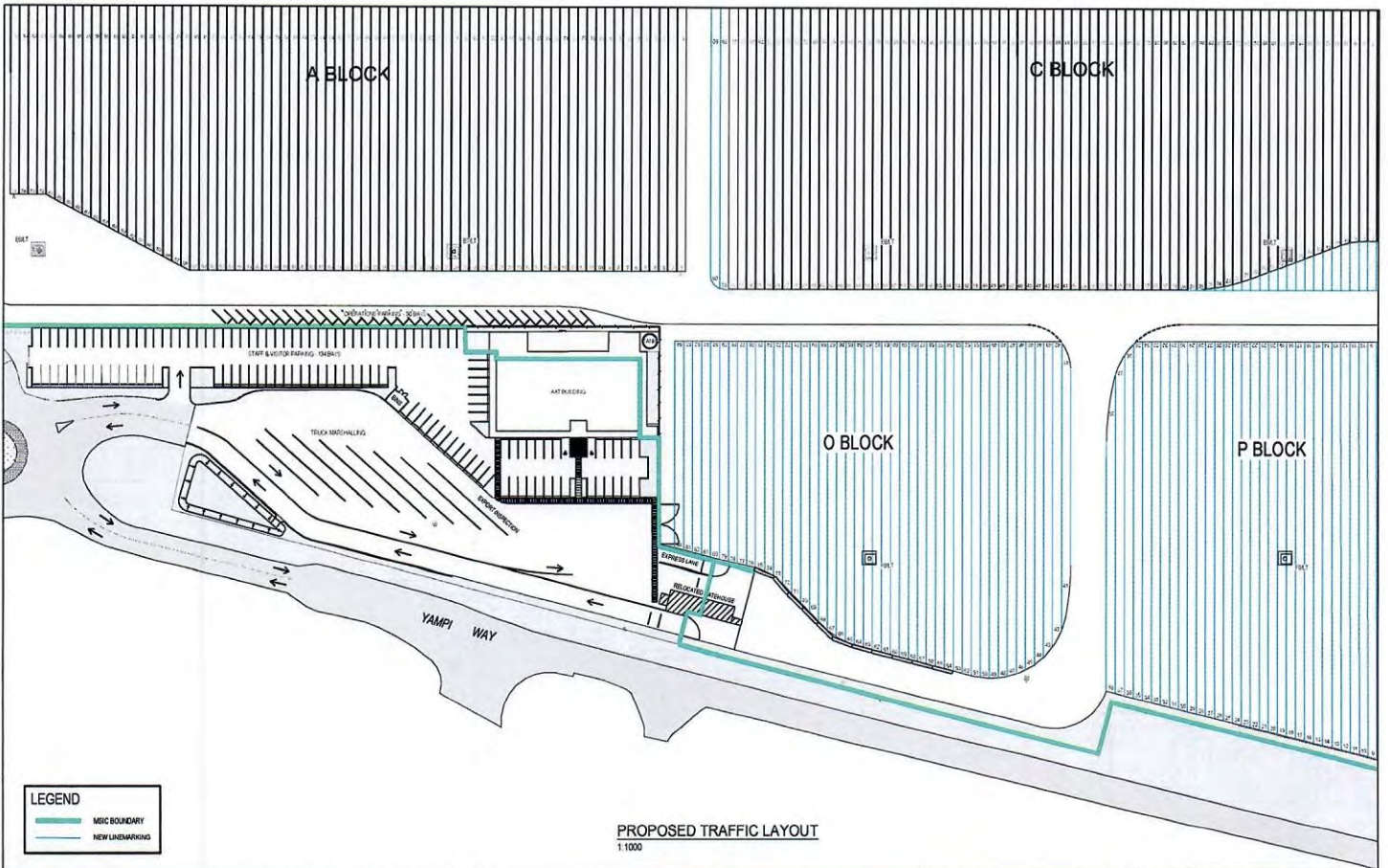
Drawing No.
 B



GENERAL ARRANGMENT
1:2500

B 31/10/10 REISED FOR CLIENT COMMENTS A 16/10/10 DRAFT FOR CLIENT REVIEW		PL DM DM PL DM DM	Prepared By PL DM DM Verified By DM DM DM Approved By DM DM DM Horizontal Datum Vertical Datum AND	Signed Date 31/10/10 31/10/10 31/10/10	Scale 1:2500 A3		Client: Australian Amalgamated Terminals	James Rose Consulting ABN 64 175 064 511 Unit F21,1-15 Barr Street SALAMAN NSW 2041 PH 02 9555 8588 FAX 02 9555 8599 mail@jamesrose.com.au www.jamesrose.com.au	Project AAT PORT KEMBLA TERMINAL REDEVELOPMENT Drawing Title GENERAL ARRANGEMENT Status: DRAFT Project No. 433 Drawing No. 433-C-01 Rev. 8
---	--	----------------------	--	---	-----------------------	--	---	--	--

REV	DATE	REVISION DETAILS	BY	VER.	APP.	Vertical Datum	Horizontal Datum	AND
-----	------	------------------	----	------	------	----------------	------------------	-----



0 31/10/19 16/10/19 REVISED FOR CLIENT COMMENTS DRAFT FOR CLIENT REVIEW	PL PL DM DM DM DM	DM DM DM DM	Prepared By PL	31/10/19	Scale 1:1000 A3			Client AAT Australian Amalgamated Terminals	 James Rose Consulting ABN 64 175 064 511 Unit F21.1-15 Barr Street BALMAIN NSW 2041 PH 02 9559 8585 FAX 02 9555 8599 mail@jamesrose.com.au www.jamesrose.com.au	Project AAT PORT KEMBLA WOLLONGONG, NSW Drawing Title PROPOSED TRAFFIC LAYOUT
			Approved By DM Horizontal Datum Vertical Datum	31/10/19 N/A AND						

PART C: TERMINAL USERS IN WHICH QUBE OR A QUBE RELATED ENTITY HAS AN INTEREST

Qube or a Qube Related Entity has a direct or indirect interest greater than or equal to 20% in the following Terminal Users who provided Stevedoring Services or PDI Operator Services at the following Terminals during the period covered by this Compliance Report:

Port Kembla Terminal

Qube Ports Pty Ltd ACN 123 021 492

Prixcar Services Pty Ltd ACN 007 063 505

Brisbane Terminal

Qube Ports Pty Ltd ACN 123 021 492

Prixcar Services Pty Ltd ACN 007 063 505

24/02/2023

RE: Operational impact of external factors at AAT's terminals in 2022

Over the 6-month period from Jul 1st, 2022, to December 31st, 2022, shipping terminals across the east coast of Australia have been adversely impacted by a range of factors beyond the control of the terminal operator. These include but are not limited to;

- Yard congestion as a result of extraordinarily high volume of Biosecurity held cargo;
- Lost berthing days due to vessel fumigation;
- Tug boat provider industrial action;
- Extended discharge times due to reduced availability of stevedore labour;
- Adverse weather conditions.

These factors combined have had a negative impact on terminal operations resulting in at times lengthy vessel delays, berth congestion and yard constraints. These issues not only impacted AAT's terminals in Port Kembla and Fisherman Islands, but also other non-AAT terminals in Melbourne and Adelaide.

AAT has worked with the various stakeholders to identify opportunities to reduce the impact of these factors through measures including expanded Biosecurity capability across all AAT facilities and offsite storage facilities.

The impacts of these events are reflected across various Cargo Dwell Times for all stevedores across all AAT terminals in the Jul – Dec 2022 period and as reported in the attached Bi-annual compliance report.

AAT BI-ANNUAL COMPLIANCE REPORT – MELBOURNE TERMINAL

REPORT PERIOD: 1ST July 2022 to 31ST Dec 2022

DATE OF REPORT: 24th February 2023

1. Complaints raised either directly with AAT or under the Non-Price Dispute Resolution Process

No.	Type of Complaint	Outcome of the Complaint
NIL		

2. Breaches of Clause 6 – Confidentiality and Ring-Fencing

No.	Type of Breach	Details of Breach	Response to the Breach
NIL			

3. Access Services

Details of any circumstance in which AAT offers Access Services to Qube or any other Qube Related Entity that are more favourable than the terms offered to any other Service Provider.

NIL

4. Contractual Arrangements

Details of any offer, or any contractual arrangement between AAT and a shipping line, that involved terms that:

- (A) link or otherwise relate in any way to the shipping line using Qube or a Qube Related Entity to supply Terminal Services at Melbourne Terminal;
- (B) obliged the shipping line to engage suppliers of Terminal Services that met certain requirements that only Qube or a Qube Related Entity could satisfy;

as described in clause 5 of the Variation to the Undertaking.

NIL